

COMPANY PROFILE



Thank You Visually Communicating
A 2003 AIA Award Winner



INTRODUCTION

COMPANY AIMS

- ✓ Mission
- ✓ Vision, Values & Advantages

QUALITY POLICY & TECHNICAL QUALITY ASSURANCE REVIEW MECHANISM

COMPANY FUNCTIONAL & HIERARCHICAL ORGANOGRAMS

COMPANY SERVICES

ENGINEERING RELATED

- ✓ Transportation Engineering
- ✓ Site Supervision & Monitoring
- ✓ Geotechnical Engineering
- ✓ Irrigation, Water Supply & Sanitation
- ✓ Urban, Rural and Regional Development
- ✓ Project Management
- ✓ GIS Mapping & Survey
- ✓ Environmental Engineering

SOCIO-ECONOMIC/ SOCIAL SECTOR/ TRAININGS

- ✓ Monitoring & Evaluation
- ✓ Participatory community & social sector development
- ✓ Occupational Health & Safety (OH&S)

COMPANY SETUP

- ✓ Human Resources
- ✓ Office Equipment's

PROJECTS DATA SHEETS

- ✓ Infrastructure projects completed – Roads & Bridges
- ✓ Irrigation, water supply & sanitation
- ✓ Solid waste management
- ✓ Survey & Monitoring Evaluation
- ✓ Environmental management
- ✓ Management Information System
- ✓ Capacity Building

REGISTRATION AND CERTIFICATES

CONTACT INFORMATION

INTRODUCTION

Spectra Engineering Solutions Pvt Ltd (SES) is a leading innovative research and management consultancy firm in Pakistan providing professional services in the fields of civil and environmental engineering specializing in engineering survey & design, EPC, consultation, construction supervision, capacity buildings, rural development, environmental planning and impact assessments for various infrastructure related projects like roads, railways, bridges, water supply schemes, water channels, street pavements etc.

Established in 2012, with head office in Islamabad and branch offices in Khyber Pakhtunkhwa (KP) and Punjab SES is geared up in providing complete engineering solutions and complete end to end project management solutions.

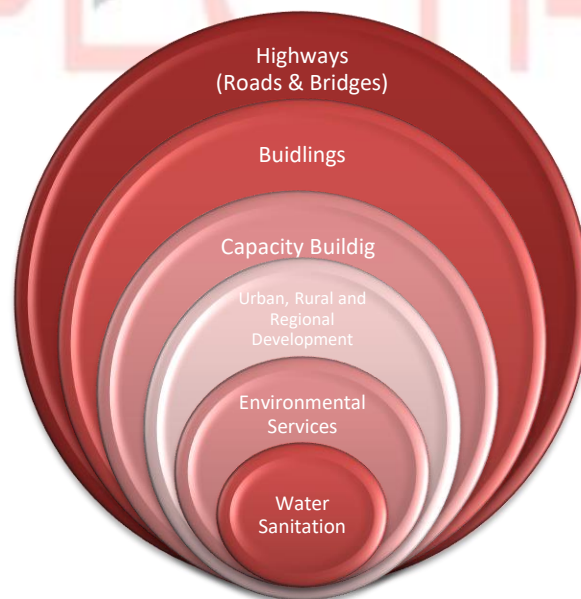
SES has worked on numerous Infrastructure development projects with some International well reputed organization including Pakistan Railways, World Bank, Japan International Cooperation Agency (JICA), United Nation Development Program (UNDP) and local government authorities like Communication and Works department (C&W) and Khyber Pakhtunkhwa Highway Authority (KPHA), KP.

We have so far designed and did construction supervision of “643” Nos. bridges in KPK and merged districts and approximately 5,000 kilometres stretch of roads/pavements in urban and in most troubled regions of Pakistan including FR’s and FATA. Various agencies have ranked us as top bridge design consultants of Pakistan.

Our breadth of skills, sectors & services makes us one of the Pakistan’s top players in delivering management & engineering solutions for public and private sector customers. We provide added value solutions which:

- Save money and time
- Reduce risks – technical, commercial, environmental
- Drive up efficiency
- Maximize sustainable outcomes – environmental, social, financial
- Embody best practice
- Result in market-leading customer satisfaction and repeat business levels

With over 33 employees and having 8 site offices in Pakistan; today, SES is one of the leading consulting houses, having worked on major projects across Pakistan including Federally Administered Tribal Areas (FATA) and Baluchistan and is capable of successfully executing projects in all parts of country where security is a big challenge.



CAPACITY

With core permanent professional staff and a roster of highly-qualified associates, SES offers a multi-disciplinary approach to its consultancies. Specialists are assembled specifically for each project and selected according to their relevant areas of expertise. SES has offices in major cities of Pakistan are well equipped with modern database, excellent telecommunications facilities, with "state of the art" technology and software library including the latest packages of hardware and software.

SES has a track record of managing complex, multi-million dollar bilateral and multilateral projects in Pakistan for both national and international clients. In addition, SES has links with a wide network of field researchers/ data collectors/service providers/ engineers and can mobilize resources quickly within Pakistan.

QUALITY POLICY

SES is an ISO 9001 certified company is committed to provide consultancy services, to the utmost satisfaction of our clients, with the highest level of professionalism and dedication. It is achieved through continuous improvement in level of expertise and commitment of our staff, and provision of necessary resources.

SERVICES

Spectra Engineering Solutions (Pvt) Ltd. (SES) is a consultancy firm providing professional services in the fields of civil and environmental engineering and is a leader in various disciplines. SES's business scope includes Survey & design, EPC, Consultation and construction Supervision.

SES is geared up in providing complete engineering solutions and complete end to end project management solutions. The company has more than 20 disciplines, including but not limited to highway and structural engineering, construction management, contract administration, quantity estimation, topographic surveys, geology and hydrology studies, environmental impact assessments, project scheduling, and providing support in other ancillary services.

SES gamut of engineers from various disciplines can handle the entire scope of engineering & project management services from the conceptual phase, through to feasibility, design, construction supervision and post-construction phases of the project.

WORK AND ACHIEVEMENTS

A few of the major projects include:

- Feasibility Study of Up-Gradation of existing Railway Line from Rohri To Kohl Taftan Via Quetta Including the Realignment of Sibi-Spezand Section (1022 Kms) – Pakistan Railways (2018- 2020)
- Feasibility Study of Rail Link from Quetta to Kotla Jam (538 Kms) (Updating of Existing Feasibility Study) - Pakistan Railways (2018- 2020).
- Damage Assessment, Supervision and Spot Checks of 1887 Schools and 764 Medium Scale Rural Infrastructure Projects to be rehabilitated under FATA Recovery Programme – UNDP Pakistan (2016–2020).
- Consultancy Services for Third Party Monitoring Agent (TPMA) for the KP, FATA and Baluchistan under Multi Donor Trust Funded projects (2012-2016).
- Feasibility design, detailed engineering estimates and construction supervision carried out for various roads stretched over 5,000 Kilometres and over 643 bridges in various districts of Pakistan particularly Khyber Pakhtunkhwa and FATA spanning a combined length of more than 4.6 Km. (2012-2020).

GEOGRAPHY AND CLIENTS

SES brings almost 10 years of diversified experience in all engineering and management sectors and has been operating in all provinces of Pakistan.

We put great emphasis on providing our clients with highest quality and most appropriate solutions, tailoring every aspect of a project to customer requirements. We have experience of working with many top national and international clients with a goal to exceed their expectations.

Some of the clients list includes;



World Bank (WB)



Peshawar Development Authority (PDA)



JICA



Pakistan Railways



Asian Development Bank (ADB)



Communication & Works Department (C&W)



United Nations Development Program (UNDP)



Pakhtunkhwa Highways Authority (PKHA)



AGA KHAN DEVELOPMENT NETWORK

Aga Khan Development Network (AKDN)



Pakistan Public Works Department

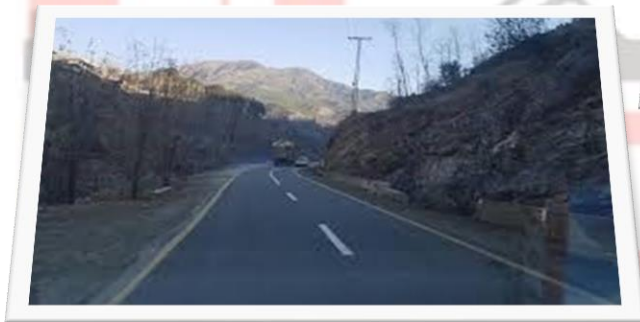
Pakistan Public Works Department (Pak. PWD)



UNITED NATIONS
INDUSTRIAL DEVELOPMENT ORGANIZATION

United Nations Industrial Development Organization (UNIDO)

PICTORIAL GALLERY OF SES PROJECTS



ENVIRONMENTAL POLICY

Spectra Engineering Solutions (Pvt.) Ltd. will continually improve its business performance and conduct its operations in an environmentally responsible manner, in order to minimize pollution, improve resource efficiency and recovery, and in order to contribute towards improving sustainability and livability of community at large.



Within the context of the projects, we are engaged on, we will achieve this by:

- Conserving energy, water, paper and other natural resources while still providing a comfortable working environment.
- Minimizing waste through recycling and using recycled products and materials wherever practical.
- Preventing and minimizing pollution.
- Providing a sound and healthy environmental workplace, and gradually implementing range of sound work practices of which includes environmental impacts in our purchasing policies where appropriate.
- Complying with relevant environmental legislation, regulations, policies and initiatives.
- Fostering an environmental responsible culture and encourage directors, employees, specialists, contractors and consultants to develop new ideas and initiatives.
- Communicating this Policy to our directors, employees, specialists, contractors and all other stake holders.



OUR MISSION IS

Our mission is to provide professional engineering & training services incorporating astute and innovative advice in a timely, cost effective and efficient manner, to the benefit of our Clients, the Community, our own Staff and Shareholders, with due consideration for the impact that our actions may have on the Environment.

As a team we strive to be market leaders in the engineering & training sector while providing outstanding customer service.

OUR VISION IS

“The world is ever-changing. To continue to thrive as a business over the next ten years and beyond, we must look ahead; understand the trends and forces that will shape our business in the future and move swiftly to prepare for what's to come contribute to the society, alleviate the suffering around us and achieve sustainable development. For tomorrow, we must be ready today.”

OUR VALUES ARE

DEPENDABILITY

- We do what we say we will do
- We deliver on time
- We do a good job

CUSTOMER SERVICE

- Continuously improve what we do
- Work together in partnership
- Communicate completely and with respect

OUR ADVANTAGES ARE

WE OFFER FOLLOWING ADVANTAGES TO CLIENTS:

- Experience of qualified professionals
- Low-Cost solutions due to low overhead framework
- Reliability through rigorous Quality Control
- Customized solutions as per client's requirement



QUALITY POLICY & ASSURANCE REVIEW MECHANISMS

We at SES are committed to provide consultancy services, to the utmost satisfaction of our clients, with the highest level of professionalism and dedication. It is achieved through continuous improvement in level of expertise and commitment of our staff, and provision of necessary resources. The quality has been

The firm is committed to provide quality services with consistency to customer by:

- Consistently meeting or exceeding customer expectations for quality and performance.
- Effective implementation of Quality Management System and its continual improvements.
- Providing professional, ethical and safe working environment

The effectiveness of our Quality Management System is continually improved through collective participation of our staff and Management Reviews.



Managing Director



Dated: May 2023.



ISO 9001: 2015 CERTIFICATE



Certification is conditional on maintaining the required performance standards throughout the certified period of registration
The British Assessment Bureau, 30 Tower View, Kings Hill, Kent, ME19 4UY

The management system of Certificate Number **2031377**
SPECTRA Engineering Solutions (Pvt.) Ltd.
Suite 201, Second Floor, Creative House (Behind Shahab Orthopaedic Hospital), Jamrud
Road, Peshawar, Pakistan

has been assessed and certified as meeting the requirements of

ISO 9001:2015
for the following activities

Provision of professional services in the field of civil, environmental engineering, planning & project
management within Pakistan

Further clarifications regarding the scope of this certificate and the applicability of requirements may be obtained by consulting the certifier.



Valid from
Initial Certification: 01 March 2016
Latest Issue: 22 April 2022
Expiry Date: 01 March 2025
subject to annual assessments

Authorised by

Mike Tims
Chief Executive Officer

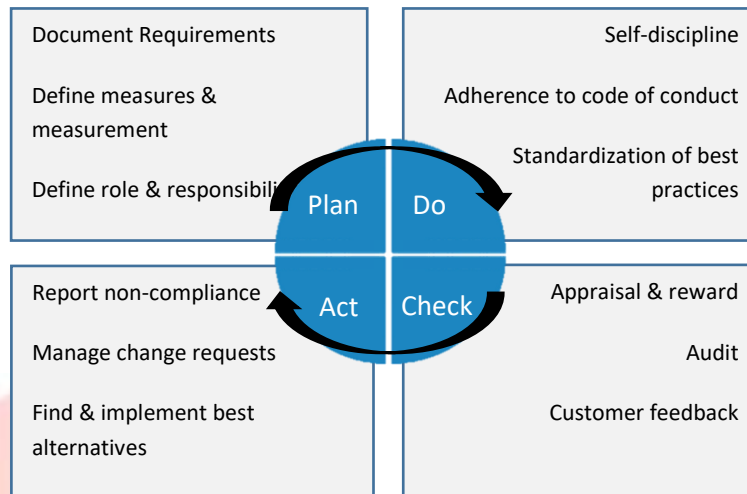
www.british-assessment.co.uk

Certificate issued by Amtivo Group Limited, trading as British Assessment Bureau

To confirm the 'Live Status' of this certificate please use the 'Certificate Verification' tool located at www.british-assessment.co.uk

TECHNICAL QUALITY ASSURANCE REVIEW MECHANISMS

SES has a Quality Management Plan in action which comprises of Quality Assurance (QA) as well as Quality Control (QC). The Quality Management plan is demonstrated below in a Plan-Do-Check-Act (PDCA) Cycle:



The basis for continuous improvement at SES. The Quality Assurance methodology for SES is divided into Entity-related and Process-related.



ENTITY QUALITY MANAGEMENT

SES being an entity is involved in providing consultancy services to clients and the quality mechanism framework we follow as below:

QUALITY ASSURANCE	QUALITY CONTROL
<p>At SES as project commences and with kick-off meeting with various stakeholders, we gather Customer Requirements in writing with clear distinction between essential & desired features, actual vs planned. The goal is in the early phase to lock in the requirements completely and to the satisfaction of the client.</p> <p>At SES we use Measures & Measurement scale for defining and gauging the acceptable, unacceptable and exceptional dimensions of the Entity.</p> <p>At SES in managing projects, we use Change Management procedure which includes maintaining documentation versions (date and time stamped). Documents are tracked using tracking control protocols in compliance to ISO 9001; and documentation paper trail is maintained in house (for 5 years) for good management.</p>	<p>We at SES Perform cross-checking after completion of every business process; quality deviations in terms of time, cost, and plan vs. perceived benefits are recorded in quality register.</p> <p>For every project, we deploy a Quality officer in every team, who possesses the same level of authority as the team leader for pinpointing quality issues.</p>

PROCESS QUALITY MANAGEMENT

Process refers to the means for producing and conveying the Entity to the customer or client.

QUALITY ASSURANCE	QUALITY CONTROL
<p>SES is hiring on merit to ensure team competency. Hiring is kept as a vigorous process where applicants are evaluated for Intelligent Quotient (IQ), academic history, work experience and soft and interpersonal skills.</p> <p>Audit activities. AT SES, Internal audits are performed by another project team whereas external audits are performed by a neutral third-party. The audit covers</p> <ol style="list-style-type: none">1) Competency of staff2) Process efficiency and effectiveness3) Equipment and4) Software. <p>At SES we use updated software for analysis and interpretation of survey data such as SPSS.</p>	<p>SES conducts Performance appraisal of teams and individual performances.</p> <p>The Quality officer records quality issues in quality manual and such findings/ issues are then discussed in an executive meeting between Managing directors and Functional heads every week. Managing Director approves due course of action which is again followed-up in next executive meeting whereas functional heads are held responsible for implementing the action plan.</p> <p>At SES, the quality officer takes repeated measures for one reading that are not rated satisfactory.</p>

QUALITY MANAGEMENT AT INDIVIDUAL LEVEL

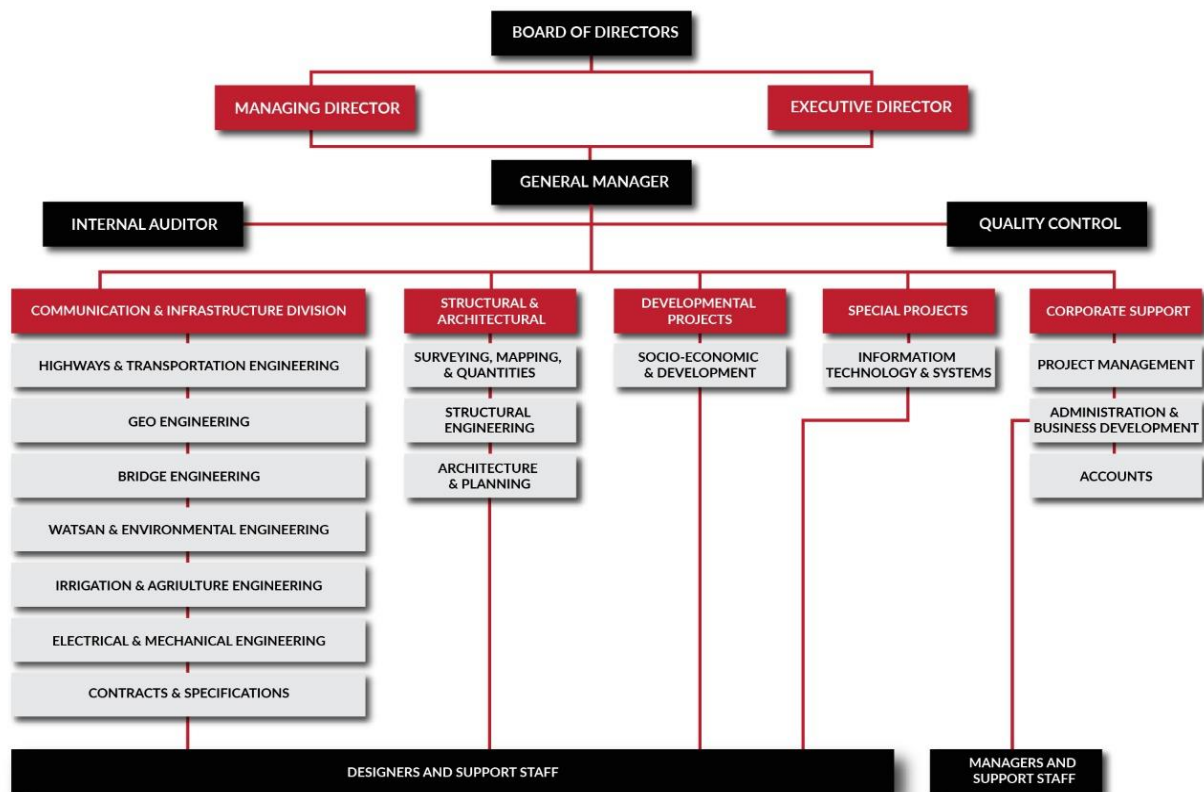
In addition to the Quality Management plan discussed above, SES promotes a quality ambience by encouraging quality at individual activities. This includes:

- Ensure punctuality in timing
- Meet deadlines
- Transfer project related information in written form and through corporate channels i.e., business email ID
- Maintain secrecy of confidential information
- Dispose of confidential information adequately
- Cooperative with IT Staff in software update

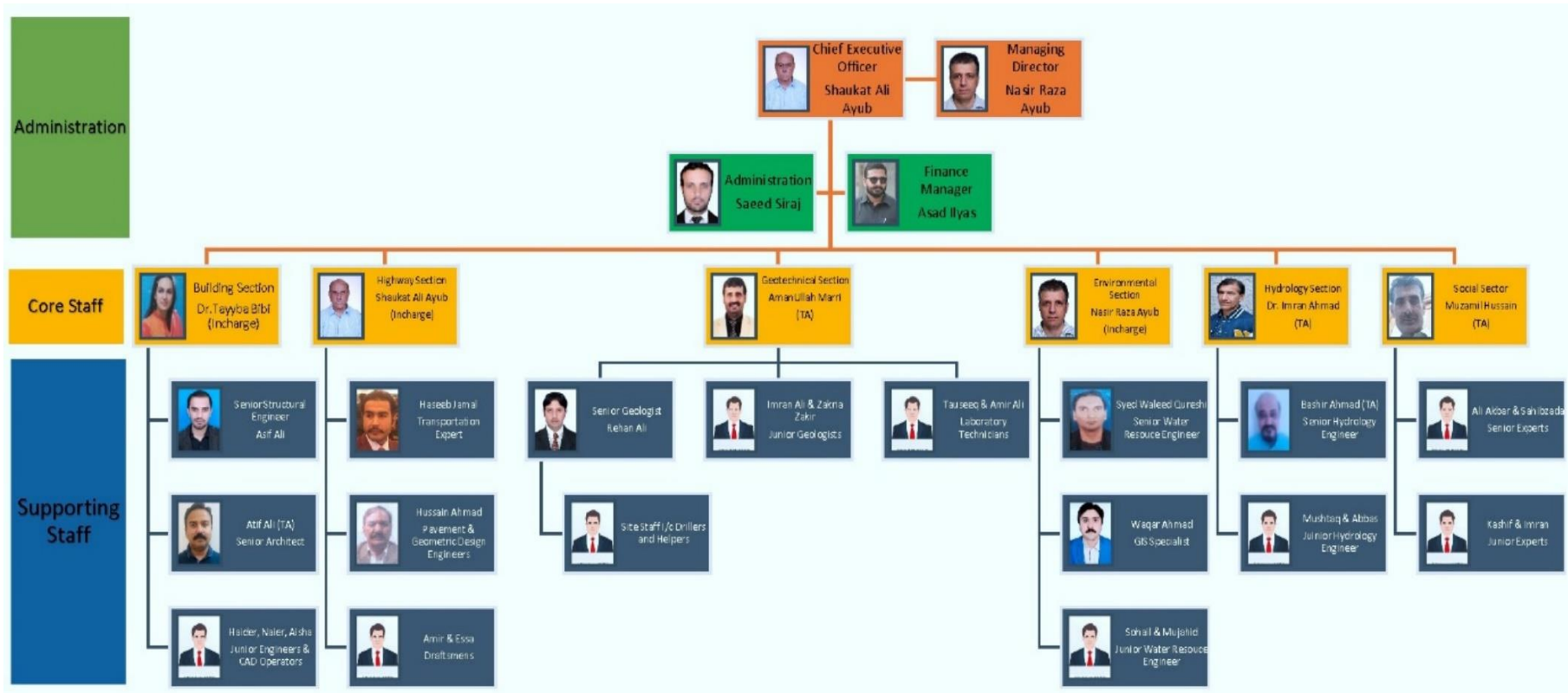


COMPANY FUNCTIONAL & HIERARCHICAL ORGANOGRAMS

FUNCTIONAL ORGANOGRAM



HIERARCHICAL ORGANOGRAM





COMPANY SERVICES

GAMUT OF ENGINEERING SERVICES

SPECTRA



Transportation

- Transportation planning
- Major Highways
- Urban & Rural Roads
- Bridges
- Railways
- BRTs & Metros
- Aviation

Water and Land Resources

- Integrated resource planning
- Irrigation and drainage
- Surface and groundwater hydrology
- Dams and hydropower
- Soil and agriculture
- Hydraulic modeling

Education and Training

- Surveys and studies
- Policy making and management
- Curriculum preparation
- Learning model development
- Training
- Management information system

Urban Planning & Development

- Master Planning
- Integrated Development Planning
- Urban Infrastructure
- Architectural Services

Structural & Industrial

- Building & Structures
- Industrial development
- Foundation Engineering

Public Health Engineering

- Water and wastewater treatment
- Water distribution
- Sewerage and drainage
- Pumping and pipelines

Social Development

- Social mobilization
- Socio-economic surveys and analysis
- Farmer's training
- Community participation in project activities
- Psychological support to the people of disaster areas
- Monitoring and evaluation

River Training and Flood Control

- Hydrological assessment
- Flood protection
- River training works
- River morphology
- Sedimentation
- Flood routing

Environment

- Initial environmental examination (IEE)
- Environmental impact assessment (EIA)
- Environmental management plan (EMP)
- Health, safety & environment (HSE)
- Solid waste management
- Wastewater treatment and disposal
- Sludge treatment
- Industrial waste management
- Pollution control
- Air pollution control
- Oil contamination
- Land use planning
- Contaminated land assessment
- Landscape design and ecology

TRANSPORTATION ENGINEERING

SES provides superior consulting & specialist services in various area of transportation engineering. Our team of professional engineers, scientists, technologists, and support staff is committed to provide sustainable, innovative & practical solutions to public and private sector owners and operators of roadway and transportation infrastructure. We work in close collaboration with our clients.

ROADS AND HIGHWAYS

SES excels in planning, designing and supervising all types of road development projects including highways, expressways and other roads (both rural and urban). It has significant design experience for all functional classifications.

We provide innovative solutions to meet the existing and future transportation demands of automobiles, trucks, buses, transit, bicycles and pedestrians in urban, rural, and industrial environments. Our transportation & traffic engineering specialists can plan and design various measures for traffic improvement for municipal, regional and provincial government roads.

SES's project teams have experience with alternative delivery systems, including design-build and public-private partnerships, to help clients overcome budget challenges and get critical infrastructure built. The services include:

- ✓ Feasibility studies
- ✓ Topographical surveys and Hydrological Studies
- ✓ Planning and Detailed Design & Engineering
- ✓ Environmental Impact Assessment and management plan
- ✓ Traffic Surveys, Forecasting & Modelling
- ✓ Land Acquisition plans, Rehabilitation & Resettlement
- ✓ Alignment and route selection
- ✓ Highway Facilities Design
- ✓ Strip Plans & Utility Relocation plans
- ✓ Cost estimation
- ✓ Road safety and Accident Studies
- ✓ Pavement Analysis
- ✓ Construction Supervision
- ✓ Geotechnical Investigations and material surveys
- ✓ Contract administration and documentation
- ✓ Corridor Management and regional planning
- ✓ Construction administration and documentation

BRIDGES AND STRUCTURES

Bridge design is yet another specialty of SES. The division is competent to design all types of bridges including flyovers and interchanges, including bridges across major rivers. Company expertise in designing cost effective solutions in creating reinforced concrete solid slab, voided slab, reinforced concrete T-beam and slab, reinforced concrete box girders, pre-stressed concrete girder and slabs, pre-stressed concrete box girder, pre-stressed concrete solid slab and voided slab, steel truss composite type superstructures has led them to be one of the industry leaders. The division has designed 663 bridge structures to date including several bridges in the most difficult and treacherous terrain of the northern areas of Pakistan.

SES always accept the challenge with great enthusiasm to provide innovative solutions in response to clients' needs with its expertise in designing from large to small bridges/structures. The services include:

- ✓ Techno-Economic Feasibility Studies
- ✓ Structural Design & Detailing including transport node design

- ✓ Procurement and Contract Administration
- ✓ Construction/ Maintenance Supervision
- ✓ Engineering Surveys
- ✓ Hydrological Studies
- ✓ Design of Safety and Access Control Barriers
- ✓ Earth and Water Retaining Structures

Whether the project is a motorway, highway, toll road a complex interchange, a facility through an environmentally sensitive area, or a bridge, SES professionals will provide innovative, cost effective and timely solutions while minimizing disruption to its users and the environment.

SITE SUPERVISION & MONITORING

Effective site supervision is essential to the success of the project. SES is capable in all forms of condition of contract including International Federation of Consulting Engineers (FIDIC) and has developed project management techniques & a Guideline Manual to ensure effective site supervision, in particular the following:

- ✓ Progress Monitoring
- ✓ Cost Control
- ✓ Responding to Difficulties encountered during the course of construction
- ✓ Measurement of the works in a timely manner.
- ✓ Project design development and planning
- ✓ Choosing professional and skilled sub-consultants
- ✓ Cost management
- ✓ Project schedule management
- ✓ QA/QC
- ✓ Contract administration- project meetings, RFI's, etc.
- ✓ Safety management
- ✓ Maximize project team efficiency
- ✓ Disputes and claims management

We have the ability to provide and administer teams of chartered engineers, specialists and other experienced and well qualified staff to supervise the Contractor's activities including observance of the Conditions of Contract, the day-to-day execution of the works in accordance with the Specifications and Drawings, and measurement and valuation of the works as construction proceeds. Such a team would supervise any additional surveys or investigations and monitor the quality and standard of materials and equipment incorporated in the Works.

We attach great importance to achieving a good working relationship with a client, and to that end are prepared to expend care and effort while being fair to the Contractor.

GEOTECHNICAL ENGINEERING

Geotechnical engineering, a branch of civil engineering, is concerned with the application of soil and rock mechanics, engineering geology and other disciplines as related to design and construction in civil engineering. At SES, we have a highly experienced geotechnical engineer who can provide quality services in the preparation of full-scale geotechnical reports, for trouble shooting of geotechnical related problems, to provide high grade skilled supervision in areas related to geotechnical activities and to attend to the technical requirements in related fields. The services include:

- ✓ Earthwork Design & Recommendations
- ✓ Foundation Analysis & Design
- ✓ Grouting & Ground Improvement Design

- ✓ Landslide Investigation & Stabilization
- ✓ Pavement Analysis & Design
- ✓ Seepage Analyses
- ✓ Site Development Feasibility Studies
- ✓ Slope Stability & Retaining Structure Design
- ✓ Subsurface Investigation, Sampling & Testing
- ✓ Geotechnical Construction Phase Services
- ✓ Physical / Chemical Analysis of Soil
- ✓ Analysis and design related to swelling and shrinkage, liquefaction, chemically active soil and water etc.
- ✓ Soil exploration for preliminary design for road and railway alignments
- ✓ Detailed investigations during construction stage
- ✓ Soil investigation for design of slopes in embankment and cuttings
- ✓ Construction supervision for earthwork for quality control
- ✓ Geophysical investigations for mapping of configuration and basement rock, vertical lateral lithological changes and water table.

IRRIGATION, WATER SUPPLY & SANITATION

The growing demand and supply of water brings with it the need for both waste water and solid waste management. SES has identified and developed expertise that is effectively able to cater to the various needs in the water supply and sanitation development sector. The projects undertaken included the utilization of both underground and surface sources.

SES specialist skills and experience in flood estimation, mapping, and mitigation, hydrologic & hydraulic modelling, planning and social considerations are highly valued by clients and joint venture partners.

Today SES's expertise has matured to cover comprehensive services that include all aspects of the Water Supply and Sanitation sector.

The services include:

- ✓ Survey, Investigation, Data Collection and Water Availability Studies
- ✓ Planning, design and execution of water supply, sewerage and drainage in plains and hills
- ✓ Satellite imagery processing, digital elevation model development, storage planning and command area development works – micro irrigation schemes
- ✓ Planning, design & execution of canal and drainage works for Irrigation
- ✓ Water-shed development planning & designs
- ✓ Water Supply and Public Health Engineering
- ✓ Environmental impact assessment & socio-economic studies for Water Resources projects
- ✓ Planning, design, construction supervision and Quality Assurance & Quality Control for Dam and related structure
- ✓ Dam and Reservoir Engineering
- ✓ Planning & Design of Hydro Power schemes
- ✓ Ground Water Investigation and Design
- ✓ Design of Water and Waste Water Infrastructure
- ✓ Technical Assistance for Project Implementation
- ✓ Design and Implementation of Community Water Supply & Sanitation Projects
- ✓ Solid Waste Management
- ✓ Decentralization of Services.

URBAN, RURAL AND REGIONAL DEVELOPMENT

Urban, Rural and Regional Development and environmentally sustainable solutions for developing healthy, safe places in which people can thrive, communities can evolve, and the environment can flourish.

Key aspects of handling planning projects in SES are:

- ✓ Planning and design of new townships and related infrastructure services.
- ✓ Planning of clean settlements: identification of sites and services, design of agricultural service centers, planning and design of village centers, agricultural land use and settlement planning schemes, socio-economic surveys and environmental impact studies; transport planning, urban design, Residential Development, Public Health Engineering and Tourism, implementation and evaluation of integrated rural development and regional development projects.
- ✓ Readily available input from in-house professionals connected with fields of transportation, infrastructure, urban planning & economic development.
- ✓ Developing project specific methodology and survey frameworks for different projects.

The services include:

- ✓ Master Planning, Town Planning
- ✓ Regional transport and development plans
- ✓ Development plans for towns and cities
- ✓ Tourism development and planning
- ✓ Social Impact Assessment
- ✓ Resettlement Action Plan
- ✓ Independent Environmental Review
- ✓ Watershed Development
- ✓ Biodiversity & Forestry
- ✓ Management Information System and Geographical Information System
- ✓ Natural Resources management
- ✓ Risk Assessment and Disaster management plan
- ✓ Monitoring & Evaluation of R&R activities
- ✓ Environmental Construction Supervision
- ✓ Infrastructure plans
- ✓ Special area planning
- ✓ Site planning
- ✓ GIS and Software development

PROJECT MANAGEMENT

Project management is the process of managing projects, which might encompass hundreds, or even thousands of separate activities. It combines the knowledge and resources to define, plan, Implement and integrate every aspect of a client's comprehensive program. State-of-the-art technology, knowledge of recent advances, and an experienced team dedicated to finding innovative and effective ways to bring every project to a successful conclusion. Our approach to project management reflects our ability to coordinate and prioritize resources across projects, departments and entities ensuring that resources are managed with a focus on the project requirement, local market and other projects requirements. Complex programs require sophisticated and often times Innovative solutions.

Our professionals bring efficiency, control and accountability to every stage of your program, from initial master planning through authorization, contract implementation and ongoing operations support. With experienced program management staff, you will know that the fundamentals of your program / project are and that progress is a matter of time, not chance.

SES's scope of construction management services includes construction project administration, construction inspection, constructability reviews, project controls and document management,

scheduling, cost estimating, and cost control, change order management, claims management and resolution, quality assurance, start up and testing and project close-out.

SES has unparalleled experience and knowledge to help clients achieve complete, effective program management. We have over years developed program management procedures that includes planning, use of computer programs / software's, procedures and processes for efficient management of resources, staff, schedules and budgets. These tools have proven reliable and successful for managing projects of any nature and complexity.

SES offers program management services for various projects, including:

- ✓ Design & Feasibility Studies
- ✓ Project Planning
- ✓ Resource Management
- ✓ Construction management
- ✓ Third party design verification
- ✓ Trainings
- ✓ Quality Assurance Programs
- ✓ Risk management

With experience in a wide spectrum of project delivery methods, SES leverages technical expertise, assembles project development teams, and mobilizes capital to get projects off the ground and onto the fast track.

GIS MAPPING & SURVEY

SES is a unique consultancy firm with its own full-fledged Survey Division which is very well equipped with complete range of state-of-the-art survey equipment. Our Survey and Mapping Division understands that precise and accurate measurements are the foundation for every design engineering project that's why our staff is kept current on the state-of-the-art procedures through participation in courses, seminars, training programs and activities of various professional organizations.

Our surveyors have recently completed an advanced AutoCAD Civil 3D training course and MicroStation CADD training, ArcGIS for Land use planning & Digital Terrain models.

The Surveying staff of the firm averages over 20 years of experience and has carried out various projects successfully using a wide range of data including satellite imageries, aerial photographs and GPS guided topographical survey.

Incorporating projects into a GIS database provides a central repository and storage for all data, ability to layer and analyse a variety of data formats, geo-processing and query functionality, and graphical display. SES have been using GIS databases and Remote Sensing technology for various types of projects of which includes roads, bridges, waterways etc.

The services include:

- ✓ Reconnaissance, Preliminary and Detailed Engineering Survey for roads & Highways, Railways.
- ✓ Topographical and cadastral Surveys and Mapping, Thematic Mapping
- ✓ Aerial Photography Aerial Interpretation
- ✓ Urban traffic studies based on Ariel Photo Techniques.

ENVIRONMENTAL ENGINEERING

Environmental Engineering is the application of science and engineering principles where the main goal is to improve the environment (air, water, and/or land resources). This requires providing healthy water, air, and land areas for human habitation and for other organisms, and to remediate polluted sites.

We provide a full range of environmental services of which includes Environmental Impact Assessment (EIA) for most of the major infrastructure and rural development projects that are designed for meeting our client's objectives of complying with the increasing regulatory demands placed upon them and to provide the framework to meet those needs.

Based on the initial Environmental impact analysis of major projects, the impact is measured and necessary mitigation and monitoring measures are incorporated in the design.

THE SERVICES INCLUDE:

✓ Environmental & Social Management Framework/Codes of Practice	✓ Social Development Studies
✓ Sectorial/Regional Environmental / Social Assessment	✓ Environmental / Social Screening / Analysis
✓ Initial Environmental / Social Examination	✓ Socio-Economic Surveys
✓ Environmental Surveys	✓ Environmental Impact Assessment
✓ Social Impact Assessment	✓ Environmental Management Action Plan
✓ Resettlement & Rehabilitation Action Plan	✓ Public / Stakeholders Consultation
✓ Project Benefit Monitoring / Evaluation	✓ Independent Environmental / Social Reviews
✓ Benefit Monitoring and Evaluation	✓ Project Prioritizations and Investment Analysis
✓ Training & Development	✓ Construction Supervision





COMPANY SERVICES



SOCIO-ECONOMIC / SOCIAL SECTOR / TRAININGS

SPECTRA

MONITORING & EVALUATION (M&E)

Monitoring is a systematic and long-term process that gathers information in regards to the progress made by an implemented project.

Monitoring is not an end in itself and allows programmes to determine what is and is not working well, so that adjustments can be made along the way. It allows programmes to assess what is actually happening versus what was planned.

Monitoring allows programmes to:

- ✓ Implement remedial measures to get programmes back on track and remain accountable to the expected results the programme is aiming to achieve.
- ✓ Determine how funds should be distributed across the programme activities.
- ✓ Collect information that can be used in the evaluation process.

Evaluation is time specific and it's performed to judge whether a project has reached its goals and delivered what was expected according to its original plan. Types of evaluation include exacta and expose impact assessment, external reviews, and self-evaluation that takes place during team meetings and workshops.

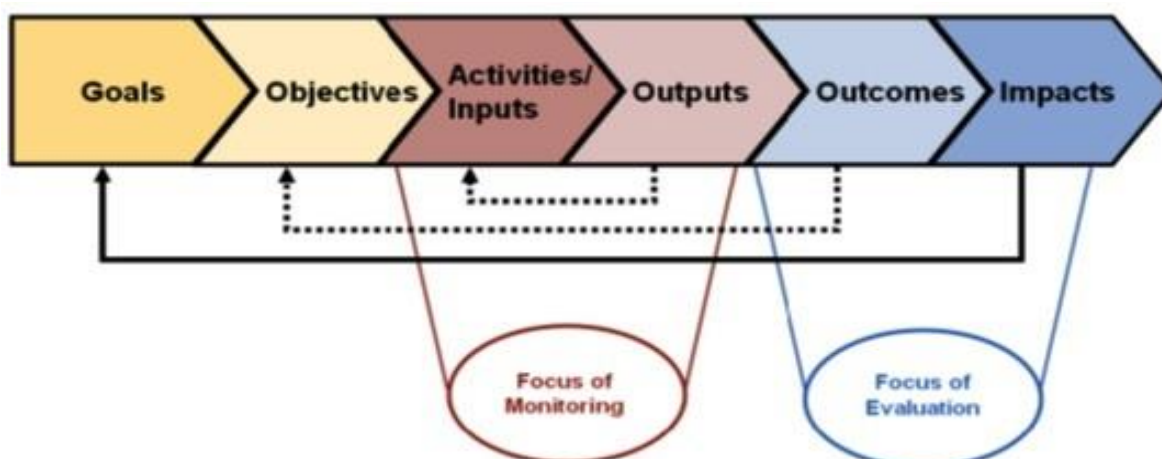
We at SES know the importance of M&E function as a measuring device since it helps in identifying grey areas and suggests remedial measures and is aimed at improving the efficiency and effectiveness of a project or organization. By reviewing milestones and final outcomes of project, it helps put work back on track and indicate management of the bottlenecks encountered during various project phases.

If done properly, it is an invaluable tool for good management, and it provides a useful base for evaluation. It helps in determining whether the resources available are sufficient and are being well used, whether the capacity is sufficient and appropriate, and whether work is going accordingly to schedule and allocated budget. Proper monitoring helps keep the project/schemes put back on right track.

We at SES will perform the M&E function by conducting:

MONITORING

The experts will identify the milestones of your project and the final outputs through goals, objectives and activities. Design a new logical framework or modify the current one according to the goals and objectives; will formulate effective and measurable performance indicators through activities/inputs and outputs for good results.



EVALUATION

The experts at SES will identify

a) Outcome and Impacts

The Outcome can be both short and long-term outcomes.

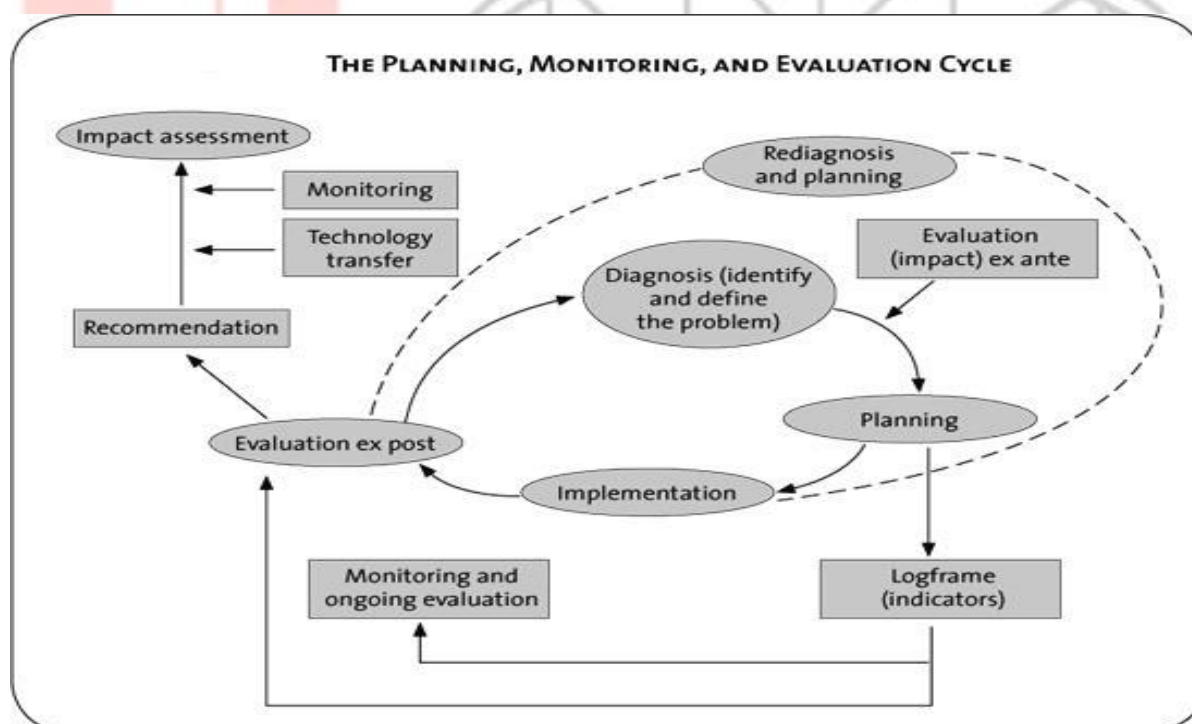
- ✓ For example, in a programme to strengthen health sector response to cases of violence against women, a short-term outcome may be the use of standardized protocols and procedures by practitioners in a health facility.
- ✓ A long-term outcome may be the sector and system-wide integration of those policies.
- ✓ It is important to be very clear from the beginning of a project or intervention, what the expected objectives and outcomes will be, and to identify what specific changes are expected for what specific population.

Carry out Impact evaluation in order to measure the difference between what happened with the programme and what would have happened without it. It answers the question, “How much (if any) of the change observed in the target population occurred because of the programme or intervention?”

We at SES will conduct rigorous research designs since it is most complex and intensive type of evaluation, incorporating methods such as random selection, control and comparison groups. These methods serve to:

- ✓ Establish causal links or relationships between the activities carried out and the desired outcomes.
- ✓ Identify and isolate any external factors that may influence the desired outcomes.

SES comprehensive monitoring, evaluation, and impact assessment framework



PARTICIPATORY COMMUNITY & SOCIAL SECTOR DEVELOPMENT

SES is a development and research-based Consultancy firm that has vast experience in providing rigorous analysis, policy advice, management and training services to national governments, international aid agencies and other public sector and non-government organisations. SES adopts a participatory approach to solving policy problems, working in partnership with clients to improve knowledge and competence.

SES aims to contribute in innovative ways to enhance economic and social progress in developing and transition economies, with a focus on the needs of the poorest people. SES work focuses on:

- ✓ improving access to, and efficiency and effectiveness of, key social sector services, including health, education and social protection;
- ✓ strengthening the use of quantitative and qualitative information in formulating, monitoring and evaluating policies and programmes and enhancing accountability;
- ✓ more effective and accountable public expenditure management;
- ✓ more effective macroeconomic management, private and financial sector policies and programmes;
- ✓ public administration and governance reform; and
- ✓ capacity building and training tailored to the specific needs of the clients.

Through policy research and development, strategic advice and management capacity, SES is able to link strategic vision to best operational practice. SES has a worldwide reputation for combining analytical rigour with practical know-how. This enables collaboration on client's engagement with many of the leading names in policy development and the management of change, including global consultancy practices, universities and major financial institutions.

SES has been providing consulting services, support to the clients in the following areas.

INSTITUTIONAL STRENGTHENING CAPACITY BUILDING

The professional and well experienced staff had conducted numerous studies from design and development of comprehensive policy programs to strengthening and capacity building institutions as per the needs of the institutions,

Some of the studies SES conducted include

- ✓ Designing and conducting workshops and seminars
- ✓ Training need assessment of institutions
- ✓ Preparing training plans and modules
- ✓ To arrange training programs and identifying training institution for Institutional Strengthening Capacity building.

COMMUNITY DEVELOPMENT

The specialized social sector division of SES is capable of carrying out all community development related activities as well as providing consultancy services like;

- ✓ Running awareness campaigns
- ✓ Motivating community people
- ✓ Formulating& organizing community members
- ✓ Capacity building for planning, monitoring, implementing, operating and maintaining through a sustainable way using participatory approach.

GENDER DEVELOPMENT

The specialized social sector division of SES is capable of carrying out all gender development related activities with special emphasis on women development activities as well as providing consultant services in the areas of gender development like empowerment of women through followings.

- ✓ Awareness programs
- ✓ Training programs
- ✓ Microcredit linkage development
- ✓ Skilled development centre
- ✓ Informal schools
- ✓ Appropriate household technology programs
- ✓ Health hygiene and medical camps

SOCIOECONOMIC SURVEY

Our well experienced staff will conduct studies, surveys and assessment using proven & tested methodologies through participatory approaches.

- ✓ Household surveys
- ✓ Community socioeconomic surveys
- ✓ Social assessment
- ✓ Community needs assessment

DISASTER RISK REDUCTION

We are building on our work in this area to further develop evidence on the effectiveness of different technologies for disaster preparedness, based on our experiences working with communities, and communicate this effectively. Our key interventions in this field focus on:

- ✓ Hazard, Risk and Vulnerability mapping and mitigation planning
- ✓ Preparedness and early warning systems and training
- ✓ Building resilient livelihoods through strengthening and diversifying income generating activities
- ✓ Knowledge and education to build local capacity
- ✓ Advocacy on policies and governance for community based DRR

OCCUPATIONAL HEALTH & SAFETY (OH&S)

OH & S management systems provide a systematic approach for the successful management of all health and safety risks in the workplace and can help reduce the potential of work-related death, injury and disease.

At SES we offer a variety of occupational health and safety related training including due diligence full management systems, Job Safety Analysis, Material Safety Data Sheets, (ER) Plans.

SES is authorized training centre for leading certification bodies like NEBOSH, IOSH, IIRSM, Fire & Safety Level-2 (UK), Fire Engineering, and British Safety Council. The trainings are conducted in a class room environment and can be delivered on client premises as well. The courses can be tailored and our staff can meet with you to determine your specific training requirements.

Our qualified instructors come from industries such as petroleum, construction, and health-care having over 20 years of training and work experience. Working closely with our clients, we aim to develop and implement practical and cost-effective fire safety solutions.

Apart from being a training provider, SES also offer wide range of consultancy services in the field of fire safety and fire protection engineering. These include:

- ✓ Fire Risk Assessments
- ✓ Fire Surveys and Audits
- ✓ Advice on Legislation
- ✓ General Fire Engineering Advice
- ✓ Fire Protection Engineering

- ✓ Education, Training and Research
- ✓ Fire Evacuation Drills
- ✓ First Aid

We also perform auditing and assessments on a company's existing occupational health and safety management system. Our consultants are experienced in providing professional advice to management and joint health and safety committees. If training is determined to be necessary, we also provide specially designed programs for management team and employees.





HUMAN RESOURCES



SPECTRA

DISCIPLINE		NUMBER	
KEY PERSONNEL	Experience > 10 years	Experience between 5 to 10 years	No. of Permanent & contract Employees
Project Director	1	-	1
Institutional Specialist	1	-	1
Team Leader	1	-	1
Highway Engineer / Contract Specialist	1	-	1
Project Managers	1	-	1
Monitoring & Evaluation Specialist	1	1	2
Geotechnical Engineer	1	-	1
Surveyor (Field Enumerators)	3	2	5
GIS specialist	1	-	1
Software Quality Assurance	1	-	1
IT Services Management	1	-	1
Business Process Management	1	-	1
Chartered Accountants	1	-	1
Certified Public Accountant	1	-	1
Occupational Health and Safety experts	1	-	1
Quantity Surveyors	1	1	2
Transportation experts	1	-	1
Water & Sanitation experts	1	-	1
Environmental & Social experts	1	-	1
Finance / Economist	1	-	1
Other Support Staff	2	3	5
Administrative Staff / Research Officers	1	1	2
TOTAL	25	8	33





EQUIPMENTS & INFRASTRUCTURE



SPECTRA

SURVEY EQUIPMENT		
S. NO	DESCRIPTION	QUANTITY
1	Total Station with all accessories Sokkia Power Set (2010-322) Model No. D21809, Motorola GP 10 Walkie – Talkie.	30 Nos.
2	Non-Prismatic Total Stations with all accessories Sokkia Power Set	20 Nos.
3	Theodolite Station with all accessories Sokkia Power Set	16 Nos.
4	Auto level with all accessories Sokkia B20 Model No. D10323	12 Nos.
OTHER EQUIPMENT		
S. No	DESCRIPTION	QUANTITY
1	Odometer (Distance Measuring Device)	14 Nos.
2	Portable Axle Load Measuring Instrument	19 Nos.
IT EQUIPMENT		
S. No	DESCRIPTION	QUANTITY
1	Online & Offline Data Centres and Storage Facilities	1x4 Nos.
2	IT Server	1 Nos.
3	Teamwork Software	1 Nos.
4	Bridges & Roads Software	1 Nos.
5	Laptops	38 Nos.
6	Desktops	05 Nos.
7	A3 Printers & Scanners	03 Nos.
8	A4 Printers & Scanners	14 Nos.
9	Colour Printers	06 Nos.
10	LCD's	04 Nos.
11	Multimedia's	03 Nos.
12	Digital Cameras	10 Nos.



INFRASTRUCTURE DEVELOPMENT



SPECTRA

ROADS & BRIDGES PROJECTS					
S/N	Start Date/ Comp. Date	Name of the Project	Client	Location	Project Cost (m. Rs.)
1	Aug 2016/ Feb 2018	Feasibility Study, Design & Rehabilitation of Mingora Jambil Gokand Road District Swat ADP No. 1003/140970	C&W Swat KPK	District Swat KPK	Rs. 650 M
2	Jan 2015/ Dec 2017	Design & Construction of Mardan Bye Pass Road from Rashakai Interchange to Jalala (Missing Links 8 KMS) ADP No. 958/150230 (2015-16)	C&W Mardan KPK	District Mardan	Rs. 1,078 M
3	Nov 2014/ Nov 2016	F/S, Design & Construction/Improvement of road (A) Kulhari Gharbi road (2.50 KMS) (B) PCC road from GHSS Baffa to Kharah (Kulhari Sharoi) road District Mansehra (PK-55) ADP No. 907/140670 (2014-15) F/S, Design & improvement of road from Khaki to Afzal Abad District Mansehra ADP No.911/140707 (2014-15) F/S, Design & Construction of road (A) Chor Kalan road (B) Jabbori to Methal Kayian road via Banda Jee Such District Mansehra ADP No. 912/140920 (2014-15)	C&W Mansehra KPK	District Mansehra	Rs. 1,250 M
4	Nov 2014/ Sep 2016	F/S, Design & Construction of road RCC bridge near Muradpur District Mansehra (PK-55) ADP No. 908/140674(2014-15) F/S, Design & Construction of Sabir Shah Nakot bridge District Mansehra ADP No. 909/140675(2014-15) F/S, Design & Construction of sum bridge District Mansehra ADP No. 910/140676 (2014-15)	C&W Mansehra KPK	District Mansehra	Rs. 1,402 M
5	May 2017/ Aug 2018	Rehabilitation of 09 No. roads and 09 bridges due to flood during July-Aug-2015 District Chitral SH: - Rehabilitation of 09 bridges. Provision of rehabilitation of flood torrential affected roads & bridges (SDG) ADP No. 1168/140498 (2016-17) SH: - Construction of RCC bridge Kosht at Buni District Chitral.	C&W Chitral	District Chitral	Rs. 700 M
6	Feb 2016/ Dec 2018	Construction of RCC Bridge at Swausar Kasal Gulibagh and Sro Manzai Upper Dir ADP No. 1141/150988 (2015-16) Construction of Bridge at Patrak Kumrat Road Upper Dir ADP No. 1144/151082 (2015-16)	C&W Dir	Upper Dir	Rs. 155.003 M
7	Aug 2015/ Jul 2017	F/S & Design of (a) improvement & Rehabilitation Dodba to Sheringal Sawnai Road (15-Km) I/C 04-Nos Bridges (b) Construction of RCC Bridge at Kotkay U/C Sultan Khel District Upper Dir (2014-15) ADP No- 779/140997 (2014-15)	C&W Dir	Upper Dir	Rs.1,205 M
8	Sep 2016/ Sep 2018	Feasibility Study, Design & Construction of Ayun Bridge District Chitral ADP No. 1046/ 140984	C&W Chitral	District Chitral	Rs. 84.002 M

9	Jan 2018/ Jan 2018	Feasibility Study and Detailed Engineering Design of PKHA Works. SH: - Road from Kumrat to Kalam.	C&W Dir	Dir Upper	Rs. 600 M
10	Dec 2016/ Jan 2017	1) Feasibility Study & Design of Qaland Abad Bypass Road (4-KM) District Abbottabad ADP No. 1121/160625 (2016-17) 2) Feasibility Study, Design & Supervision of Mansehra Bypass Road District Mansehra ADP No. 1120/160624 (2016-17)	C&W Abbottabad	District Mansehra	Rs. 2,693.25 M
11	Oct 2016/ Jul 2017	Feasibility Study & Design and Construction of Road I/C 03 No. Bridges along right Bank River Jhelum from Phalair to Kohala (35-KM) District Abbottabad Changed to Feasibility study, Design of Road I/C 03 No. of Bridges along Right Bank of River Jhelum from Phalair to Kohala (35-KM) District Abbottabad ADP No. 1089/150887 (2016-17)	C&W Abbottabad	District Abbottabad	Rs. 1,674.76 M
12	Aug 2015/ Aug 2015	Feasibility Study, Design & Rehabilitation of Mingora Jambil Gokand Road District Swat ADP No. 893 (2014-15)	C&W Swat KPK	District Swat KPK	Rs. 650 M
13	Oct 2016/ Jan 2017	Design & Construction of road from Changla to Islamabad District Abbottabad ADP No. 1124/160626	C&W Abbottabad	District Abbottabad	Rs. 2,003.27 M
14	Apr 2018/ Apr 2018	Consultancy services for design vetting of the schemes "Rehabilitation of road from Chamkani to PAF Badabera Peshawar District. Sub Head: Bridge – 1 & Bridge – 2. ADP No. 1001/140680 (2017-18)	C&W Peshawar	Peshawar	Rs. 300 M
15	Mar 2017/ Mar 2017	Feasibility Study, Design and construction of Baryam to Gat Serai Road, Arkot to Baikand road and Kabal to Kala Kalay Road (20-KM) Sub Work: Beryum to Gat Serai Road (02 Nos. Bridges) ADP No. 996/140682 (2016-17)	C&W Swat KPK	District Swat KPK	Rs.800 M
16	Mar 2017/ Apr 2017	Feasibility Study & Detailed Engineering Design for reconstruction of bridge at Tauheed Abad, District Peshawar – Naguman section of provincial highway S1.	PKHA Peshawar	Naguman Peshawar	Rs. 640 M
17	Apr 2020/ May 2020	Design of Road at Ghar Kalay (Shuhuda Road) Mitha Khel District Karak. ADP No. 923/ 190144 (2019-20)	C&W Karak	District Karak	Rs. 270.941 M
18	Feb 2016/ Mar 2016	Construction of RCC Bridge at Guldok Dhamtor District Abbottabad (90 Meters) ADP No. 1162/150861	C&W Abbottabad	District Abbottabad	Rs. 250 M
19	Jul 2016/ Aug 2016	Pakhtunkhwa Highway Authority (PKHA) Consultancy services for engineering design of "Restoration of Bada bridge on Swabi-Topi Road District Swabi	PKHA Peshawar	District Swabi	Rs. 150 M
20	Aug 2017/ Aug 2017	Provision for rehabilitation of flood/torrential affected roads & bridges (SDG) ADP No. 1168/160498 (2016-17) Restoration/ Reconstruction of Shalfalam bridge on river Panjkora Dir Lower.	C&W Dir	Dir Lower	Rs. 200 M

21	Jan 2019/ Dec 2019	Construction of Thlikote Bridge at Jhari Kas Road District Haripur. ADP No: 1262/170577 (2017-18)	C&W Haripur	District Haripur	Rs. 174 M
22	Sep 2016/ Sep 2020	Widening and carpeting of Booni Buzand Torkhow road (28-Km) District Chitral ADP No. 782/90417 (2014-15)	C&W Chitral	District Chitral	Rs. 1,108.4 M
23	Aug 2020/ Nov 2020	Feasibility Study, Detailed Engineering Survey, Soil Investigation, Hydrological Study and Detailed Design of a Bridge & Rural Road Immit Valley, Ghizer, Gilgit Baltistan	AKDN	Gilgit Baltistan	Rs. 120 M
24	Feb 2021/ Apr 2021	Feasibility Study, Preparation of PC-1, and Tender Documents of Proposed PSDP Scheme "Construction of Pre-Stressed RCC Bridge at Hassa over River Kunhar, near Govt. Degree College, Hassa, UC Shohla Mazullah, District Mansehra" (Estimated Bridge Span = 60 M)	Pak-PWD	District Abbottabad	Rs. 125 M
25	April 2021/ July 2021	Feasibility Study, Detailed Engineering Design of "Construction of Inter-District Road from Torghar to District Bunner (Length - 25 KM)	PKHA	District Torghar/Bu nner	Rs. 3,946.78 M
26	April 2021/ Aug 2021	F/S, and Design of Conversion of 40 NOs of Existing Steel Bridges to RCC Bridges Including New Bridges (DFID Assisted, Acrow/ NATO to Canadian Steel Bridges Provided by Pak Army) ADP No. 1707/ 200326 (2020-21)	C&W Swat	District Swat	Rs. 2,695 M
27	May 2021/ Sep 2021	Construction of 10 Numbers of RCC Bridges in Khyber Pakhtunkhwa (On Need Basis) ADP NO. 1644/190598 (2020-21)	C&W Buner	District Buner	Rs. 1,492 M
28	May 2021/ Jan 2023	Construction of Roads and Bridges on Need Basis' ADP No. 1764/ 180615 (2020-21) Sub Head: 1) Const./ Widening/ Dualization of Road from Lund Khwarh to Fazle Abad Pul Killi and Mote Banda Tehsil Takht Bhair. 2) Const./ Rehab: & B/T of Road from Hathian to Lund Khwarh and Lund Khwarh bypass Road. 3) Const./ Rehab: & B/T of Road form Umar Abad to Sanga Gul Mera Road.	C&W Mardan	District Mardan	Rs. 400 M
29	Sep 2019/ Nov 2019	F/S and Detailed Engineering Design of ADP Scheme No. 1014-190490 (2019-20) "Construction of Flyover/ Underpass at Farooq-E-Azam Chowk Charsadda"	PKHA Peshawar	District Charsadda	Rs. 700 M
30	Sep 2021/ Oct 2023	Feasibility Study, Detailed Design and Construction Supervision of RCC Bridge at (1) Gram Tribal District Kurram (2) Ali Zyarat Zeran Tribal District Kurram ADP No. 1872/ 195305 (2020-21)	C&W Kurram	District Kurram	Rs. 450.56 M
31	Sep 2021/ Jun 2023	Feasibility Study, Detailed Design and Construction Supervision of RCC Bridge in Mishti Tribal Districts Orakzai of Khyber Pakhtunkhwa, ADP No. 1974/195305 (2020-21)	C&W Orakzai	District Orakzai	Rs. 341.89 M

32	Dec 2021/ Feb 2022	Feasibility Study and Detailed Engineering Design of ADP Scheme No. 1573/ 210440 (2021-22): Construction of Approach Roads of Kalur Kot Bridges at River Indus.	PKHA	District Kohat	Rs. 1,500 M
33	Apr 2022/ Apr 2024	Construction Supervision of PKHA Works: ADP No. 1613/190490 (2021-2022) Construction of Flyover at Kuladher Chowk District Charsadda.	PKHA	District Charsadda	Rs. 700 M
34	Sep 2022/ Aug 2024	Construction of 14-Nos of RCC Bridges in Khyber Pakhtunkhwa (on need basis) SH: Construction of RCC Bridge at Anderay Govt: Post Graduate College Timergara District Dir Lower ADP No. 1643/190598 (2021-22)	C&W Dir Lower	District Timergara	Rs. 1,492 M
35	Mar 2023/ May 2023	Construction of Nowshera Bridge Abbottabad ADP No. 1500/220598 (2022-23)	C&W Abbottabad	Abbottabad KPK	-
36	May 2023/ Aug 2023	Construction of Takatak to Hayaserai Bridge Dir Lower ADP No. 1521/220850 (2022-23)	C&W Dir Lower	District Timergarah	-

MONITORING & EVALUATION/ BUILDING PROJECTS

1	Feb 2013 Jan 2015	Monitoring of Rural Livelihood & Community Infrastructure Project (RLCIP)	World Bank	KPK/ FATA	Rs. 12 M
2	Feb 2013 Jan 2015	Monitoring of FATA Urban Centre Project (FUCP)	World Bank	KPK/ FATA	Rs. 07 M
3	Feb 2013 Jan 2015	Monitoring of Economic Revitalization of KP and FATA (ERKF)	World Bank	KPK/ FATA	Rs. 20 M
4	Feb 2013 Jan 2015	Monitoring of KP Emergency Road Recovery Project (KP ERRP)	World Bank	KPK/ FATA	Rs. 08 M
5	Feb 2013 Jan 2015	Monitoring of KP Southern Community Support Project (SADP)	World Bank	KPK/ FATA	Rs. 181 M
6	Sep 2016 Sep 2019	Long Term Agreement for The Provision of Damage Assessment, Supervision and Spot Checks of Schools and Medium Scale Rural Infrastructure Projects	UNDP	KPK FATA	Rs. 18,048 M
7	Feb 2016 Dec 2016	Damage Assessment of 100 Infrastructure Schemes in SWA, rehabilitation under CR FATA UNDP	UNDP	South Waziristan	Rs. 5,400 M
8	Feb 2020 Sep 2020	Conducting of Substantial Completion of the Economic Infrastructure Schemes in South Waziristan, North Waziristan and Khyber Districts.	UNDP	FATA & FRs	Rs. 295 M
9	Dec 2019 Dec 2020	Conducting of Schools Assessment in District Kurram & Orakzai	UNDP	District Kurram & Orakzai	Rs. 175 M
10	Aug 2022 Sep 2023	Construction of Slaughter House (Design and Supervision) at District Peshawar Khyber Pakhtunkhwa Pakistan.	UNIDO	District Peshawar	Rs. 300 M

RAILWAY ENGINEERING PROJECTS

1	Jan 2018 Dec 2019	Feasibility Study of Rail Link from Quetta to Kotla Jam (538 Kms) (Updating of Existing Feasibility Study).	Pak Railway	Quetta	Rs. 236.91 B
---	----------------------	---	-------------	--------	--------------

2	Jan 2018 Dec 2019	Feasibility Study of Up-Gradation of existing Railway Line from Rohri to Kohl Taftan Via Quetta Including the Realignment Of Sibi-Spezand Section (1022 Kms).	Pak Railway	Quetta	Rs. 186.09 B
---	----------------------	---	-------------	--------	--------------

TRANSACTION ADVISORY PROJECTS

1	May 2021 Oct 2022	Transaction Advisory Services for Improvement of Rail Link from Jacobabad to Kot-Adu (ML-2) Section of Pakistan Railways.	PAK Railway	Kot Adu	600.27 M
2	May 2021 Oct 2022	Transaction Advisory Services for Improvement of Rail Link from Rohri to Sibi Section of Pakistan Railways.	PAK Railway	Quetta	344.62 M
3	May 2021 Oct 2022	Transaction Advisory Services for Improvement of Rail Link from (CTR and Signaling) from Kot Adu to Attock (ML-2) Section of Pakistan Railways.	PAK Railway	Kot Adu Attock	1,159.60 M
4	May 2021 Oct 2022	Transaction Advisory Services for Improvement of Rail Link from Kotri to Jacobabad Section of Pakistan Railways.	PAK Railway	Kotri Jacobabad	882.81 M

WATER SUPPLY & SANITATION PROJECT

1	Oct 2020 Apr 2021	Design Consultancy Services for Diversion & Handling of Municipal/ Industrial Effluents and Solid Waste Polluting the Major Canals of Peshawar.	PDA	Peshawar	474.68 M
2	Dec 2022 Jun 2023	Feasibility Studies, Detailed Design of Water Supply Scheme from Bara River to Peshawar Cantt & City.	PHE	Peshawar	-

SPECTRA



REGISTRATION CERTIFICATES



SPECTRA



SECURITIES AND EXCHANGE COMMISSION OF PAKISTAN

Company Registration Office
1st Floor SLIC Building No.7, Blue Area,
Islamabad

CERTIFICATE OF INCORPORATION

[Under Section 32 of the Companies Ordinance, 1984 (XLVII of 1984)]

Corporate Universal Identification No. **0078633**

I hereby certify that **SPECTRA ENGINEERING SOLUTIONS**
(PRIVATE) LIMITED is this day incorporated under the Companies
Ordinance, 1984 (XLVII of 1984) and that the company is **limited by shares.**

Given under my hand at Islamabad this 22nd day of February, Two
Thousand and Twelve.

Fee Rs. **2,500/-**



(Shaukat Hussain)
Additional Registrar of Companies

No. JEL **13884**
Dated **23-2-12**



Date : 22-09-2020

Time : 13:19:12

KNTN **K3976352-8** **Category** **COMPANY**
Name **SPECTRA ENGINEERING SOLUTIONS PVT LTD**

Business Name

Sr.	Business Name
1.	SPECTRA ENGINEERING SOLUTIONS PVT LTD

CNIC/Reg No.

0078633

Address

TF 360, DEANS TRADE CENTER, PESHAWAR

Block/Sector/Road

City

PESHAWAR

Service CategorySERVICES PROVIDED BY TECHNICAL, SCIENTIFIC & ENGINEERING CONSULTANTS
,9815.5000**Date of Registration with
KPRA**

17 Jan 2018

Operational Status as per ATL Active[Print](#)[Back](#)

TAXPAYER REGISTRATION CERTIFICATE

ORIGINAL

NTN 3976352-8
Category COMPANY-(PRIVATE LTD.)
Status RESIDENT
Reg. / Inc No. 0078633 **Reg. / Inc Date:** 22-FEB-2012
Name SPECTRA ENGINEERING SOLUTIONS PRIVATE LIMITED
Address HOUSE # 189, STREET-10, SECTOR E-1, HAYAT ABAD, PESHAWAR,
DISTT: PESHAWAR, KHYBER PAKHTUNKHWA
Principal Activity MANAGEMENT CONSULTANCY ACTIVITIES

Registered for Income Tax w.e.f 09-MAY-2012
(SERVICES)
Representative's CNIC/ NTN 1730150272967
Name NASIR RAZA AYUB
Email Address NASIR.R.AYUB@GMAIL.COM
Tax Office RTO PESHAWAR

Business Name 1) SPECTRA ENGINEERING SOLUTIONS PRIVATE LIMITED
HOUSE # 189, STREET-10, SECTOR E-1, HAYAT
ABAD, PESHAWAR, PESHAWAR, KHYBER PAKHTUNKHWA

This Certificate Shall be prominently displayed at a conspicuous place of the premises in which business or work for gain is carried on. NTN number is also required to be indicated on the signboard.


NOTE:- The NTN must be written on all returns, payment challans, invoices, letter heads, advertisements etc. and all correspondence made with the tax departments.



RGCRT-052012-24400469-0

Date of Printing: 10-MAY-2012



	OFFICE OF THE ASSISTANT COMMISSIONER (TFD,UNIT-56) REGIONAL TAX OFFICE PESHAWAR
---	--

No. RTO (PR)/TFD-I/NDC/ 116

Dated: 07/02/2020

NO DEMAND CERTIFICATE

It is hereby certified that **M/S SPECTRA ENGINEERING SOLUTIONS (PVT) LIMITED**, is an existing Tax Payer of Tax Department Regional Tax Office Peshawar, and is assessed to tax vide **NTN:3976352-8**, As per report of officer **Inland Revenue E&C-10 Corporate Zone, Regional Tax Office Peshawar**, vide letter No- **892 dated 30/01/2020** there is no Income tax outstanding arrear demand against the above mentioned taxpayer.

This certificate is being issued on the specific request of the taxpayers for record Purpose.


(MEHR UR REHMAN)
ASSISTANT COMMISSIONER
(TFD, Unit-56
(Meh-ur-Rehman)
Assistant Commissioner IR
Unit 56 RTO, Peshawar

1041

PAKISTAN ENGINEERING COUNCIL



Serial No 14706
PEC-4A

Registration No: **CONSULT/1573**

Date of Registration: **25-06-2012**

CERTIFICATE OF REGISTRATION OF PAKISTANI CONSULTING ENGINEER (UNDER PAKISTAN ENGINEERING COUNCIL ACT 1976)

This is to certify that M/s **SPECTRA ENGINEERING SOLUTIONS (PVT) LTD.** Address **H # 36, ST # 36, STREET # 23-A, SECTOR-A, BAHRIA ENCLAVE, ISLAMABAD** have been registered as Consulting Engineers at Serial No **CONSULT/1573** of the Register of Pakistan Engineering Council with following particulars:-


Type of Ownership (021,022,023,024) **(PRIVATE LIMITED COMPANY)**

Field of Specialization

(Project-profile Code Nos.) **1201,1204(i),1215(ii)(HIGHWAYS/BRIDGES),1226,1235(FIVE ONLY)**
(FOR CIVIL ENGG WORKS ONLY)

Date of Issue:
06/09/2022




Registrar
Pakistan Engineering Council,
Islamabad.

Note:

1. This Certificate of Registration shall expire on **30th June 2025** and will be renewed on payment of the required fee before 31st July, 2025.
2. Description of project profile codes is shown on reverse.



GOVERNMENT OF KHYBER PAKHTUNKHWA
COMMUNICATION & WORKS DEPARTMENT

Dated Peshawar, April 06, 2015

NOTIFICATION

No.SOR/3-8/Consultancy/W&S/2010: In continuation to this department Notification of even number dated 21.05.2014 the following shortlisted consultants as approved by the Consultants Selection Committee are hereby notified as being eligible to participate in the bidding process to provide design and supervision consulting services till further order:-

BUILDING SECTOR

Sno.	Name of firms	Address of the firm	Contact No. Fax No. E-mail address
1	Hassan & Behram Consulting Engineers International	H/No.249, St # 05, Sector H-1, Phase-2, Hayatabad Peshawar.	091-5890057 091-5890058 h_bwajid@hotmail.com

ROAD SECTOR

Sno.	Name of firms	Address of the firm	Contact No. Fax No. E-mail address
1	Spectra Engineering Solutions	H/NO.189, Sector E-I, Phase-I Hayatabad Peshawar	091-582383 info@spectra.net.pk
2	Hassan & Behram Consulting Engineers International	H/No.249, St # 05, Sector H-1, Phase-2, Hayatabad Peshawar.	091-5890057 091-5890058 h_bwajid@hotmail.com

BRIDGES

Sno.	Name of firms	Address of the firm	Contact No. Fax No. E-mail address
1	Spectra Engineering Solutions	H/NO.189, Sector E-I, Phase-I Hayatabad Peshawar	091-582383 info@spectra.net.pk

Copy is forwarded to:-

- 1) The Chief Engineer (Centre) C&W Peshawar.
- 2) The Chief Engineer (North) C&W Peshawar.
- 3) The Chief Engineer (East) C&W Abbottabad.
- 4) The Superintending Engineer C&W Circle, Peshawar.
- 5) All concerned consultants.

Secretary C&W

(Engr. Babar Majeed)
Section Officer (Roads)



**GOVERNMENT OF KHYBER PAKHTUNKHWA
PAKHTUNKHWA HIGHWAYS AUTHORITY (PKHA)**

Tel: # 091-0213272, Fax # 091-0210434, E-mail: info@pkha.gov.pk
Attach Department Complex, Khyber Road Peshawar

No. 2-PKHA/ 493

Dated 22/04/2015

NOTIFICATION

The Competent Authority has been pleased to approve the following consultants as shortlisted / prequalified for the year 2014-15, to carryout Feasibility Study & Detailed Engineering Design of PKHA works as and when required by this Authority:

S#	Name of firms	Address of the Firms	Contact Nos. / Fax Nos.
1	Spectra Engineering Solution	189 Sector E-1, Phase-1, Hayatabad Peshawar.	PH# 091-5823483
2	H&B Consulting Engineers International	House No. 249, Street No. 5, Sector H-1, Phase-II, Hayatabad Peshawar.	Ph # 091- 5890057 Fax # 091 - 5890058.

Copy to the:

1. Managing Director, PKHA, Peshawar for information please.
2. All Deputy Directors in PKHA for information & necessary action.
3. PS to Secretary C&W Department, Peshawar for information please.
4. Administrative Officer-PKHA, Peshawar for information & record.


DIRECTOR CONSTRUCTION


DIRECTOR CONSTRUCTION



GOVERNMENT OF KHYBER PAKHTUNKHWA
COMMUNICATION & WORKS DEPARTMENT

Dated 10/12/2020

NOTIFICATION:

NO.SO(B)/II-52/Consultancy/PBC/2020-21/C&WD: The following shortlisted consultants as recommended by the Consultants Selection Committee vide Chief Engineer (Centre), C&W Peshawar letter No. CEC/GS/2-5/806 dated 19/11/2020, and No. CEC/GS/2-5/854 dated 01/12/2020 are hereby notified to be eligible to participate in bidding process in order to provide design and supervision consulting services till further order:-

BUILDING SECTOR

S.#	Name of firms	Address of the firm	Contact No. Fax No. E-mail address
01	M/S CIV-Tech Associates	Block – 301 to 305-C, City Towers, University Road, Peshawar Pakistan	Tel: +92-91-5703371 Email: civtechassociate@gmail.com
02	M/S Spectra Engineering Solution (Pvt) Ltd	Suit No. 201, Second Floor, Creative House main Jamrud Road, Phase III Chowk, Peshawar	Tel: +92-91-5700763 Email: info@spectra.net.pk

Secretary C&W

Copy is forwarded to the:-

- 1 Chief Engineer (Centre) C&W Department Peshawar w/r to letters quoted above.
- 2 Chief Engineer (North) C&W Department Peshawar.
- 3 Chief Engineer (East) C&W Department Abbottabad.
- 4 Chief Engineer (Merged Areas), C&W Department, Peshawar.
- 5 The Project Director, PaRRSA, C&W Department Peshawar, 12-C, Railway road, University Town, Peshawar.
- 6 Director (P&M) C&W Department Peshawar.
- 7 Superintending Engineer (PBC) C&W Circle, Peshawar.
- 8 Deputy Director (IT) C&W Department for uploading the same on official website of the Department.
- 9 Concerned Consultant.

Section Officer (Buildings)

Scanned with CamScanner



PAKISTAN COUNCIL OF ARCHITECTS AND TOWN PLANNERS

*This is to certify that Ar. Khalid Muhammad Haroon
was registered on the 19th Day of March, 2013
as an Architect with this Council*

*Established in the year one thousand nine hundred and eighty three under the
Pakistan Council of Architects and Town Planners Ordinance (IX of 1983)
promulgated by the President of Pakistan, a body corporate for the regulation
of architecture and town planning professions.*

*In witness whereof the Common Seal has been hereunto affixed
by authority of the Council on the 19th Day of March, 2013*

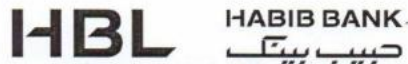
Tahir S. Fayli
Registrar



Sami
Chairman

Registration No. A03812

P.S. This Certificate is held subject to the conditions of Section 16 of PCATP Ordinance and Byelaw 89.



To,

SPECTRA ENGINEERING SOLUTIONS PVT LTD
HOUSE # 36, ST.# 23-A, SECTOR-A
BAHRIA ENCLAVE
ISLAMABAD
Ref #: GU03/2481/ACC/0019
Date: 11.07.2018

ACCOUNT MAINTAINANCE CERTIFICATE

This is to certify that we are maintaining HBL Current Freedom Account Number 24817000085303 since October 04th, 2017. The account is being maintained with following details:


- | | |
|------------------------|-------------------------------------|
| 1. Title of Account: | SPECTRA ENGINEERING SOLUTION PVT TD |
| 2. IBAN: | PK06 HABB 0024 8170 0008 5303 |
| 3. Bank & Branch Name: | HBL BAHRIA ENCLAVE BRANCH (2481) |
| 4. Status of Account: | ACTIVE |
| 5. Nature of Account: | BUSINESS ACCOUNT. |

The conduct of account is quite satisfactory and company has a good market reputation.

This certificate is issued at the specific request of the customer and does not constitute any liability on the part of the bank or any of its officers; further this certificate does not amount to any guarantee.

Sincerely,

HBL Bahria Enclave Branch.


SAIMA AZEEM
Bank Officer
Operation Manager
PA # 4644
Bahria Enclave
HBL Islamabad (2481)


Branch Operation Manager/Branch Manager
GHAYAS UDDIN
Branch Manager
PA # 14524
Bahria Enclave
HBL Islamabad (2481)

HBL Bahria Enclave, Plot # 03, Divine Arcade, Urban Boulevard, Bahria Enclave, Islamabad.
Contact: 051-2721181-82-83, Email: ghayas.uddin@hbl.com,
<http://www.hbl.com>



CONTACT INFORMATION



Spectra Engineering Solutions Pvt Ltd.

HEAD OFFICE:

**201, Creative House Behind Shahab Orthopedic Hospital,
Jamrod Road, Peshawar, Khyber Pakhtunkhwa.
Pakistan.**

Tel: +92 91 5700763

BRANCH OFFICE:

**Flat No. 01, Office No. 02 (2nd Floor)
Al- Hareem Arcade
Bahria Enclave Islamabad.**

Tel: +92 51 2721169

Email: info@spectra.net.pk

Web: www.spectra.net.pk