



# 2024

- Planning
- Appraisal
- Engineering Design
- Construction Management & Supervision
- Monitoring
- Institutional and Capacity Building



# SPECTRA

Engineering Solutions (Pvt) Limited

# TABLE OF CONTENTS

1

INTRODUCTION

2

VISION

3

MISSION

4

CORE VALUES

5

ORGANISATION  
CHART

6

MANAGEMENT  
OVERVIEW

7

SERVICES OVERVIEW

8

SECTOR SERVED

9

MAJOR ACHIEVEMENT  
(KEY PROJECTS)

10

PROJECT LIST

11

QUALITY POLICY

12

HUMAN RESOURCE

13

EQUIPMENT'S &  
INFRASTRUCTURE

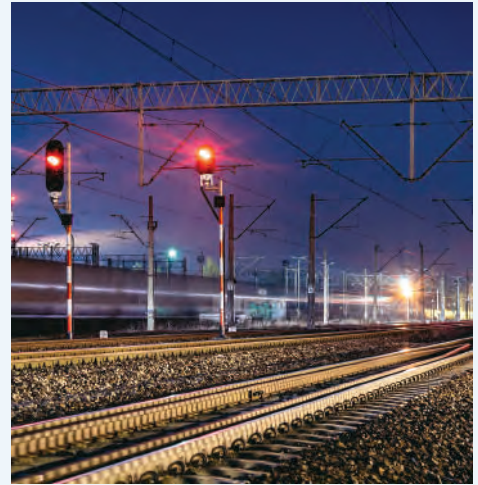
14

CLIENTS SERVED



# Spectra Engineering Solutions (Pvt.) Ltd.

Sustaining and improving the quality of people's lives



## Who we are

Spectra Engineering Solutions (Pvt.) Ltd. (SES) is a leading innovative research and management consultancy firm in Pakistan providing professional services in the fields of civil and environmental engineering specialising in engineering survey & design, EPC, consultation, construction supervision, capacity buildings, rural development, environmental planning and impact assessments for various infrastructure related projects like roads, railways, bridges, water supply schemes, water channels, street pavements etc.

Established in 2012, with head office in Islamabad and branch offices in Khyber Pakhtunkhwa (KP) and Punjab SES is geared up in providing complete engineering solutions and complete end to end project management solutions.

SES has worked on numerous Infrastructure development projects with some International well reputed organisation including Pakistan Railways, World Bank, Japan International Cooperation Agency (JICA), United Nation Development Program (UNDP) and local government authorities like Communication and Works department (C&W) and Khyber Pakhtunkhwa Highway Authority (KPHA), KP.

We have so far designed and did construction supervision of over "793" Nos. bridges in KPK and merged districts and approximately 5,000 kilometres stretch of roads/pavements in urban and in most troubled regions of Pakistan including FR's and FATA. Various agencies have ranked us as top bridge design consultants of Pakistan.

Our breadth of skills, sectors & services makes us one of Pakistan's top players in delivering management & engineering solutions for public and private sector customers. We provide added value solutions which:

- Save money and time
- Reduce risks – technical, commercial, environmental  
Drive up efficiency
- Maximise sustainable outcomes – environmental, social, financial  
Embody best practice
- Result in market-leading customer satisfaction and repeat business levels

With over 33 employees and having 8 site offices in Pakistan; today, SES is one of the leading consulting houses, having worked on major projects across Pakistan including Federally Administered Tribal Areas (FATA) and Baluchistan and is capable of successfully executing projects in all parts of country where security is a big challenge.

## Capacity

With core permanent professional staff and a roster of highly-qualified associates, SES offers a multi-disciplinary approach to its consultancies. Specialists are assembled specifically for each project and selected according to their relevant areas of expertise. SES has offices in major cities of Pakistan are well equipped with modern databases, excellent telecommunications facilities, with "state of the art" technology and software library including the latest packages of hardware and software. SES has a track record of managing complex, multi-million dollar bilateral and multilateral projects in Pakistan for both national and international clients. In addition, SES has links with a wide network of field researchers/ data collectors/service providers/ engineers and can mobilise resources quickly within Pakistan.

## Quality Policy

SES is an ISO 9001:2015 certified company committed to provide consultancy services, to the utmost satisfaction of our clients, with the highest level of professionalism and dedication. It is achieved through continuous improvement in the level of expertise and commitment of our staff, and provision of necessary resources.

## Markets we serve

SES serves its clients across a broad spectrum of markets which include:

- Transportation
  - Bridges
  - Highways
  - Railways
- Buildings
- Environment
- Water
  - Water Resources
  - Water & Sanitation
- Urban Development

## Services we offer

- Program Management
- Project Management
- Geotechnical Investigation
- Environmental Assessments (IEE, ESIA, EIA)
- Health, Safety & Environmental (HSE) monitoring
- Planning, Feasibility, and Scoping Studies
- Concept and detailed engineering designs
- Access roads and well site engineering and infrastructure
- Construction management and supervision
- Electrical engineering solutions
- Quantity surveying and cost estimation
- Procurement and contracts support
- Community engagement
- Economic and financial analysis
- Institutional assessment
- Sustainable analysis
- Monitoring & evaluation
- Topographic, GIS, and other surveys
- Transaction advisory services

## Values

- Bringing imagination to all we do
- Delivering on our commitment
- Advancing our skills and experience
- Enjoying what we do

## Code of conduct

- Act with integrity
- Open and honest
- Respect the dignity of others
- Share knowledge

## Code of behaviour

- Treat everyone with respect, trust and dignity
- Be polite
- Be professional and ethical at all times
- Be honest and open

## Business principles

Conducting our business in a manner that:

- Is befitting our purpose, values and code of conduct
- Brings value to our clients, shareholders and delivery partners
- Is socially responsible
- Is committed to meeting health and safety responsibilities to its employees, its clients and the wider public
- Is environmentally sustainable
- Does not involve corruption, bribery or unethical practices

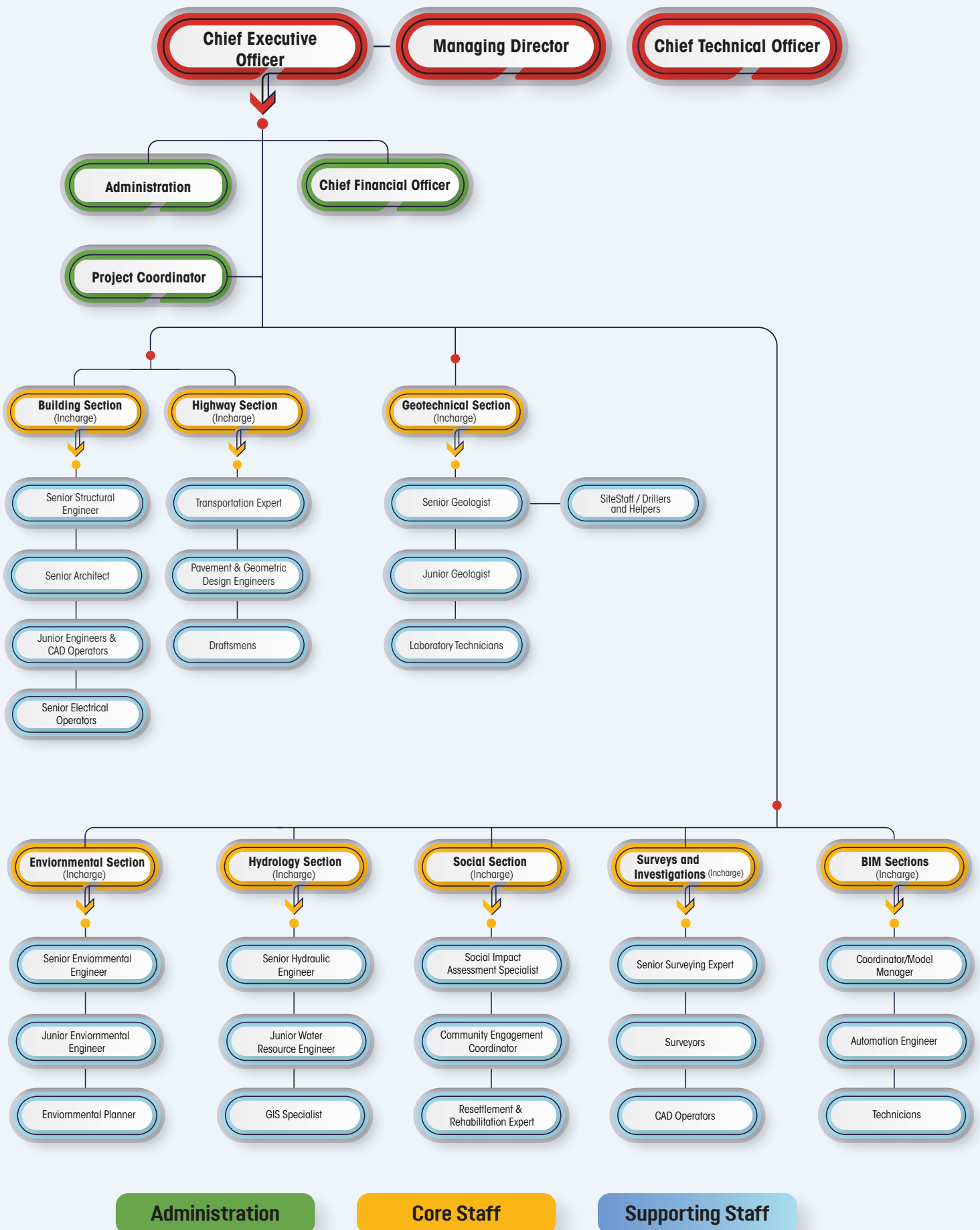
## Business management systems

- Carrying out our business under the guidelines of the Business Management Systems (BMS)
- Maintaining compliance and certifications in ISO 9001:2015





# ORGANISATION CHART





# MANAGEMENT

## OVERVIEW



**Shaukat Ali Ayub**  
**Technical Head & CEO**

M.Sc. Civil, B.E. Civil

Boasting a half-century of seasoned proficiency in civil engineering, has meticulously crafted over 3,000 bridges of diverse typologies. Venerable expertise underscores a distinguished career, exemplifying a profound impact on the nuanced realm of bridge engineering and infrastructure development.



**Dr. Tayyaba Bibi**  
**Director Project Management**

Ph.D. Structural Engineering  
M.Sc. Structural Engineering,  
B.Sc. Civil

With over a decade of expertise, Dr. Tayyaba specializes in intricate structural engineering within civil engineering. Her adeptness in formulating and analyzing diverse structural systems propels advancements in the field.

Dr. Tayyaba's strategic project management style, complemented by effective communication, cultivates collaboration, mitigates risks, and ensures timely, budgetconscious project completion. Her unwavering commitment to excellence consistently surpasses client expectations, enhancing the firm's reputation and fostering growth in the competitive civil engineering industry.



**Nasir Raza Ayub**  
**Managing Director**

M.Sc. Engineering Science,  
M.Sc. Business System,  
M.B.A Master of Business Administration

Veteran with 20 years of experience, excels in the fusion of engineering science, business systems, and management. Adept navigation of intricate intersections demonstrates a profound understanding of complex paradigms, establishing him as a formidable force in both technical and managerial realms.



**Asif Ali**  
**Chief Technical Officer (CTO)**

M.Sc. Structural Engineering,  
B.Sc. Civil

Skilled professional specialized in structural engineering and has successfully engineered over 400 bridges within the domain of civil engineering. His acumen exemplifies a nuanced understanding of intricate engineering challenges, establishing him as a formidable presence in advancing the discipline.





# MANAGEMENT

## OVERVIEW



**Saeed Siraj**  
**Chief Economist**  
M.Sc. Economics,  
M.Sc. Commerce



Leverages over 13 years of professional expertise in the field of economics, demonstrating astute proficiency in economic principles, analytics, and strategic insights. His contributions underscore his valuable standing within the discipline.

**Asad Ilyas**  
**Financial Analyst**  
Foundation in Accountancy,  
B.Sc Finance,  
Certified Public Accountant (CPA)



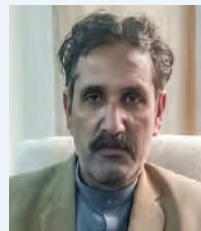
With a decade of tenacious expertise, excels in accountancy and intricate accounts analytics, seamlessly spanning the realms of civil engineering and the corporate sector. Judicious financial acumen and analytical prowess render him an invaluable asset adept at navigating the complexities of multifaceted financial landscapes.

**Jamil Raza**  
**Electrical Engineer**  
M.Sc. Electrical, B.Sc. Electrical



Armed with 29 years of seasoned expertise, specializes in electrical engineering across civil and developmental sectors. Proficient skills in designing and implementing electrical systems make him a highly valued contributor to a spectrum of developmental projects.

**Niaz Muhammad Khan**  
**Surveying Expert**  
B.Tech Civil, DAE Civil



Conceited over 30 years of experience, the professional specializes in Topographic and Land surveys within the field of civil engineering. The extensive expertise encompasses a wealth of knowledge in survey methodologies for diverse engineering applications.

# SERVICES



Spectra Engineering Solutions Pvt. Ltd. (SES) specializes in offering technically and commercially optimal solutions to various clients. The company's services are diverse and extensive, encompassing a wide range of areas.





## Building

In the Building sector, we offer wide range of services. Our expertise spans residential, commercial, institutional, Heritage buildings and industrial projects. With a focus on quality and efficiency, we ensure successful outcomes for every construction endeavor.

We take pride in our successful project deliveries within the building sector, particularly in Khyber Pakhtunkhwa (KPK), Pakistan. Our services extend to independent design checks for various structures, showcasing our expertise in areas such as multi-story buildings. Our adept design team, comprised of qualified engineers and skilled CAD technicians, harnesses the latest design software. With a comprehensive understanding of local and international design standards, including BCP-2021 (Building Code of Pakistan 2021), IBC 2021 (International Building Code 2021), ASCE 7-16 (Minimum design loads for buildings and other structures), ACI 318-19 (Building code requirements for structural concrete), ASTM (American Society for testing and materials). We ensure that our building projects meet and exceed the highest industry benchmarks.



### Services

- Architectural Design
- Structural Designing
- Design Review
- Structural Health Assessment
- Retrofit Design of Existing Structures
- Preservation & Strengthening of Heritage Buildings
- Construction Supervision
- Sustainable Design
- Cost Estimation, PC-1 and Tender Documents
- Land Use Planning
- Building Information Modeling (BIM)
- Energy Modeling
- Technical and Advisory Services
- Soil Investigation



The wide and in-depth technical knowledge of the SES engineers about the behavior of structures and their practical experience results in providing optimized design solutions to its worthy clients without compromising on the performance of structures.

The optimized design solutions in SES are achieved by:



- using the latest modeling and design techniques,
- Understanding of the latest national and international standards and codes,
- Selection of high-performance efficient construction materials,
- Development of construction drawings having perfect no wastage reinforcement detailing of the structural components.

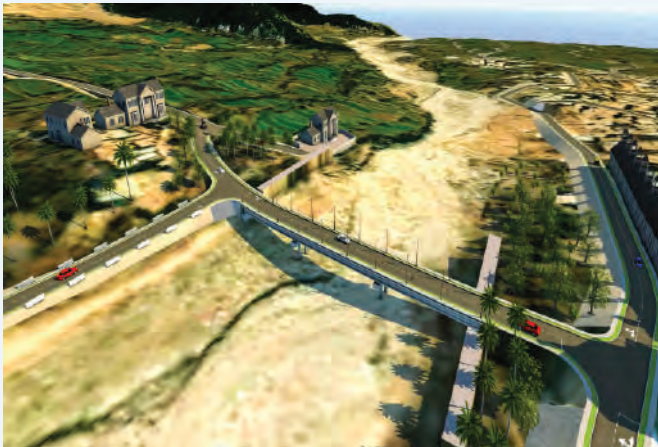




## Transportation

Our services in the Transportation market include Planning, Feasibility Study, Engineering Design, Design Review, and Construction Supervision of Bridges, Flyovers, Interchanges, Highways, and Railways.

We have successfully delivered projects in Pakistan and especially in Khyber Pakhtunkhwa (KPK). We have carried out independent checking of design for various structures for our clients. Our design team comprises of well qualified and experienced engineers and CAD technicians who have the ability to use latest design software. We are fully conversant with the local as well as international design standards including BS5400, BD37/01, AASHTO, AREMA, ACI, and WPCPHB 1967.



### Services

- Feasibility Study and Alignment Design
- Concept Design
- Pavement Design
- Geometric Design
- Traffic Studies
- Topographic Surveys
- Soil Investigations
- Bridge assessment, testing and evaluation
- Post-tensioned girder bridge design
- Design of steel composite bridges
- Design of suspension bridges
- Tunnels/underpasses/Culverts
- Design of retaining walls
- Environmental Studies
- Hydraulic modeling and scour protection
- Slope Stability Analysis
- Financial and Economic Analysis
- Cost Estimations, PC-1 and Tender Documents



## Water Supply

In the Water sector, our comprehensive services encompass Planning, Feasibility Study, Engineering Design, Design Review, and Construction Supervision. We specialize in delivering tailored solutions for a range of water-related projects, including dams, water treatment plants, and pipelines. Our dedicated team, comprising experienced engineers and specialists, is adept at utilizing cutting-edge technology and the latest design software. With a thorough understanding of both local and international standards, including environmental considerations, we ensure the successful execution of projects that contribute to sustainable water management and infrastructure development. We have expertise in planning, concept and detailed design of:

- Water Supply
- Water Sanitation
- WASH
- Canals
- Flood Management
- Water Resource Management



## Services

- Water Supply
- Dam Design and Engineering
- Water Treatment Plant Design
- Pipeline Infrastructure Planning
- Hydroelectric Power Generation
- Flood Control and Management
- Water Quality Analysis
- Environmental Impact Assessment
- Reservoir and Retention Basin Design
- Groundwater Management
- Water Resource Planning
- Small Dams



## Third Part Monitory

In the Monitoring & Evaluation sector, our comprehensive services span Planning, Feasibility Study, Evaluation Design, Performance Monitoring, and Program Supervision. Specializing in providing tailored solutions for diverse projects, we focus on assessing and enhancing the effectiveness of programs and initiatives. Our dedicated team, comprised of seasoned evaluators and specialists, is proficient in leveraging state-of-the-art technology and cutting-edge analytical tools. With a meticulous understanding of both local and international standards, including considerations for impact assessment and accountability, we ensure the successful implementation of projects that contribute to robust monitoring and evaluation practices, fostering continuous improvement and informed decision-making.



We take pride in our successful project deliveries within the Monitoring & Evaluation sector, establishing a significant presence in Khyber Pakhtunkhwa (KPK), Pakistan. Our services extend to conducting rigorous assessments and independent evaluations, showcasing our expertise in areas such as program monitoring, impact evaluation, and performance assessment. Our adept team of evaluators and specialists brings a wealth of experience to the table, employing advanced methodologies and analytical tools to ensure the thorough examination of projects. Utilizing cutting-edge technology and the latest evaluation software, we demonstrate a commitment to excellence. With a comprehensive understanding of both local and international monitoring and evaluation standards, we adhere to benchmarks that uphold accountability and contribute to informed decision making, fostering continuous improvement in program effectiveness.



### Services

- Program Monitoring
- Impact Evaluation
- Performance Assessment
- Independent Evaluation
- Data Collection & Analysis
- Capacity Building
- Strategic Planning and Design
- Quality Assurance
- Policy and Impact Advisory
- Stockholder Engagement





## Social Sector

In the Social sector, we offer Planning, Feasibility Study, Program Design, Impact Assessment, and Project Oversight. Specializing in tailored solutions for community development, education, and healthcare initiatives, our dedicated team utilizes advanced technology and adheres to local and international standards. We ensure the successful execution of projects that contribute to sustainable social development and community well-being.



We understand that the key to sustainable development lies in empowering communities. We actively involve local stakeholders at every stage of the project, from inception to completion. Through comprehensive community engagement strategies, we ensure that the voices of all stakeholders are heard and respected. Our approach goes beyond traditional consultation methods; we facilitate meaningful dialogue, foster trust, and build strong relationships with community members, local leaders, and organizations. By actively involving communities in decision-making processes, we not only enhance project outcomes but also promote ownership and accountability.

We take pride in our successful projects within the social sector in Khyber Pakhtunkhwa, Pakistan. Our services include independent assessments and design checks for community development, education, and healthcare initiatives. With a skilled team and cutting-edge technology, we ensure our projects meet the highest industry standards, considering local and international social sector benchmarks for excellence.



### Services

- Community Development Programs
- Educational Project Support
- Healthcare Facility Planning
- Independent Assessments
- Program Design & Oversight
- Community Impact Assessments
- Technology Integration
- Environmental Considerations
- Stakeholder Engagement
- Adherence to Social Standards





## Environmental Sector

we specialize in providing comprehensive environmental services tailored to meet the needs of our clients. With a focus on environmental engineering principles, we strive to improve and safeguard air, water, and land resources, ensuring healthy habitats for human and ecological communities while remediating polluted sites.



Our approach integrates cutting-edge technology with proven methodologies to address complex environment issues effectively. By leveraging data-driven insights and predictive modeling, we empower our clients to make informed decisions that balance environmental protection with sustainable development.

Through ongoing research and development initiatives, we remain at the forefront of emerging trends and best practices in environmental management, ensuring that our solution remain adaptive and resilient in the face of evolving environmental threats.

Our team of experts is dedicated to delivering high-quality services that meet the highest standards of environmental stewardship and regulatory compliance. With a commitment to innovation and sustainability, we strive to create a positive impact on the environment and communities we serve.

The services include:



### Services

- Environmental & Social Management Framework/ Codes of Practice
- Sectoral/Regional Environmental / Social Assessment
- Environmental Management Framework
- Environmental Management Action Plan
- Initial Environmental / Social Examination
- Environmental Surveys
- Environmental / Social Screening / Analysis
- Environmental Impact Assessment
- Environmental Management Action Plan
- Public / Stakeholders Consultation
- Independent Environmental / Social Reviews
- Training & Development





## Surveys

In our Surveys and Investigation sector, we offer comprehensive services including

- Topographic Surveys
- Geo-technical Investigations
- Hydrological Investigations
- Structural Health Assessment
- Concrete Mix-Design.



SES uses latest instruments and technologies, aligned with international standards, collectively enhance the efficiency, accuracy, and reliability of topographic surveys, geo-technical investigations, hydrological assessments, structural health assessments, and concrete mix-design processes

## Services

- Topographic Survey with Contours
- Detailed mapping of land surface features
- Identification of natural and man-made elements
- Accurate elevation data collection
- Surface Geological mapping
- Drilling bore holes and logging
- Seismic reflection Survey
- Test Pit Excavation and testing
- Field testing and Laboratory testing of disturbed and undisturbed samples
- Establishing High Flood Levels (HFL) of Rivers
- Catchment Characteristics
- Hydraulic Analysis
- Rapid visual screening (RVS) OF FEMA P-154
- Non-Destructive Testing (NDT)
- Vibration Monitoring
- Strain Monitoring
- Acoustic Emission Testing
- Infrared Thermography
- Load Testing
- Rebar Scanning

- Ground Penetrating Radar
- Ultrasonic Pulse Velocity Test
- Destructive Testing
- Optimization of mix proportions for desired properties

### Interpretation of Remote Sensing Image



Identify regional structure, faults, joints and unfavorable geology by remote sensing interpretation

### Seismic Reflection Survey



Understand approximately soil distribution state, fault, crushed zone

### Surface Geological

Geological	Measurement of attitude of bed rock and joint, fault strike
Magnifying Glass	Observation of rock, soil, joint
Schmidt hammer	Measurement of hitting strength
Hand-held GPS	survey point positioning

Investigate and estimate the engineering geological factor, such as geomorphology, stratigraphic lithology, geological structure, hydrogeological conditions, adverse geological phenomena and special stratum, to determinate the geophysical prospecting and estimate the geotechnical conditions of site

### Drilling



Understand shape of each earth layer, ground engineering feature, distribution of bed rock, sampling ,SPT

### Standard Penetration Tests



Confirm soil layer's relative density and consistency, understanding of ground strength and transformation features

### Field Permeability Tests



Produce permeability coefficient

### Cone Penetration Tests



Identify thin soil layers, thin layers, soft layers, gather compression and shear index

### Test



Establish the presence and character of soils and weathered rock and to take samples for material testing

### Investigation Adits



Explore the nature of overburden, assessment of the rock conditions and rock mass classifications to assess the rock support at each proposed tunnel

## Surveys

### Sampling



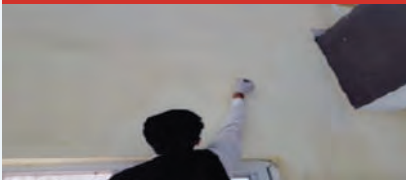
Take disturbed samples, undisturbed samples, water samples, rock samples in situ

### Laboratory Testing



Soil test, rock test, water test on laboratory

### Visual Inspection



Direct observation by trained professionals to identify visible signs of distress such as cracks, corrosion, or deformation

### Non-Destructive Testing



This tests structural integrity without causing damage

### In-Situ Testing



Sampling and laboratory testing of structural components to assess material properties and structural capacity

### Laboratory Testing



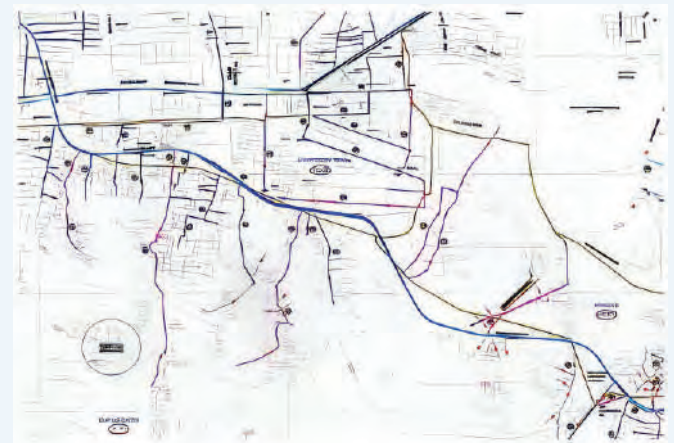
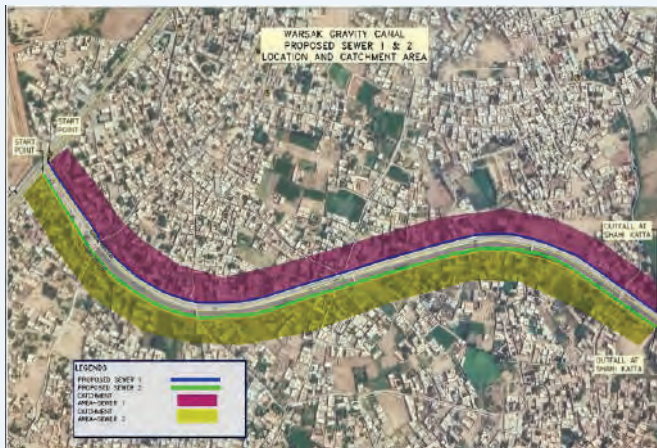


## BIM Section

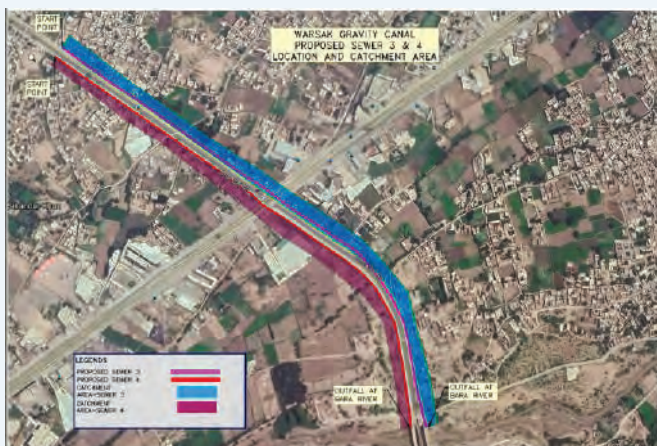
In our BIM (Building Information Modeling) Section, we provide a wide array of services aimed at optimizing the digital representation and management of construction projects throughout their lifecycle. Our comprehensive offerings include 3D Modeling, Visualization, Clash Detection, and Resolution, ensuring a collaborative and coordinated approach. We specialize in Data Management, facilitating seamless collaboration among stakeholders and adherence to industry standards. With a commitment to excellence, our BIM Section supports informed decision-making, minimizes errors, and ensures the successful implementation of BIM methodologies for enhanced project outcomes.

### Services

- 3D Modeling
- Visualization
- Clash Detection and Resolution
- Data Management
- Collaboration and Coordination
- BIM Standards Adherence
- Training and Education
- BIM Strategy Development
- Quality Assurance and Control
- Technological Support
- Innovation and Adoption
- Communication Enhancement



The following services collectively contribute to the BIM Section's role in enhancing project outcomes, promoting collaboration, and ensuring the successful implementation of BIM methodologies in design and construction projects.

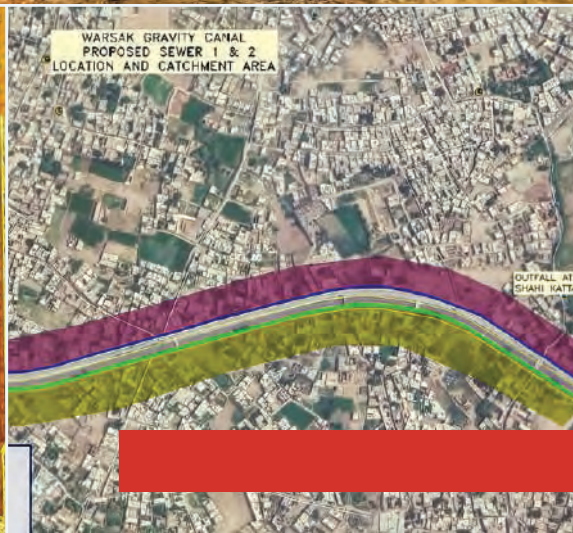






# Key Projects

consists of top of the range equipment and machinery, including Earth movers and Transport Equipment, Reinforced Concrete Equipment, and Light weight Machinery







## FEASIBILITY STUDY OF RAIL LINK FROM QUETTA TO KOTLA JAM (538 KMS) (UPDATING OF EXISTING FEASIBILITY STUDY)

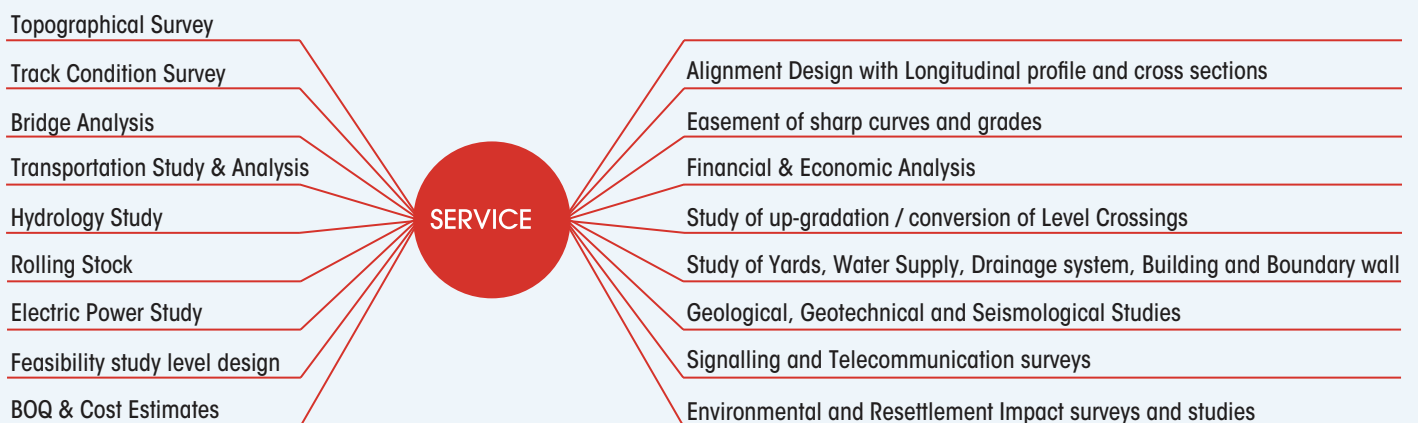
**Project Cost**  
236.91 BN

**Duration**  
24 Months

**Client**  
Pakistan Railway

### Key Features

Feasibility Study and Feasibility Level Design of 538-KMS Railway Track







## FEASIBILITY STUDY OF UP-GRADATION OF EXISTING RAILWAY LINE FROM ROHRI TO KOHL-TAFTAN VIA QUETTA INCLUDING THE REALIGNMENT OF SIBI-SPEZAND SECTION (1022 KMS).

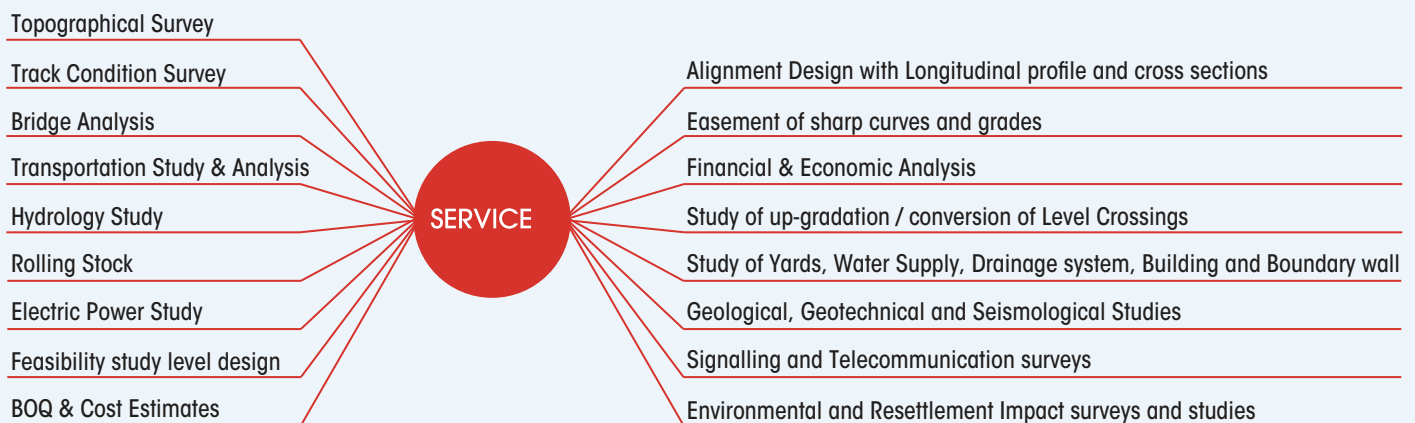
**Project Cost**  
186.09 BN

**Duration**  
24 Months

**Client**  
Pakistan Railway

### Key Features

Feasibility Study and Feasibility Level Design of 1022-KMS Railway Track







## CONSTRUCTION OF SLAUGHTER HOUSE (DESIGN AND SUPERVISION) AT DISTRICT PESHAWAR KHYBER PAKHTUNKHWA PAKISTAN.

**Project Cost**  
300 MN

**Duration**  
14 Months

**Client**  
UNIDO

### Key Features

Detailed Engineering Design and Full Time Construction Supervision of Slaughter House

Bids evaluation

Technical Specifications

Site supervision

Quality Assurance

BOQ & verification

**SERVICE**

Topographic survey

Geotechnical Investigation

Detailed Structural Design

Design Review

Construction Drawings

Tender documentations







## LONG TERM AGREEMENT FOR THE PROVISION OF DAMAGE ASSESSMENT, SUPERVISION AND SPOT CHECKS OF SCHOOLS AND MEDIUM SCALE RURAL INFRASTRUCTURE PROJECTS

**Project Cost**  
18,048 MN

**Duration**  
36 Months

**Client**  
UNDP

### Key Features

Detailed Engineering Surveys, Design, Damage Assessment, Interim Spot Checks, Substantial, Final Completion Certificates and M&E report

### SERVICE

Damage Assessment/ Physical Inspection

Preparation of detailed working drawings, plans, elevations and sketch schemes

Interim spot checks

Physical verification

Certifying contractor

Substantial Completion Certificate

Final Completion Certificate







## DAMAGE ASSESSMENT OF 100 INFRASTRUCTURE SCHEMES IN SWA, REHABILITATION UNDER CR FATA UNDP

**Project Cost**  
5,400 MN

**Duration**  
10 Months

**Client**  
UNDP

### Key Features

Providing detailed monitoring and evaluation services

### SERVICE

Physical inspection, site visits and survey of 100 infrastructure projects

Detailed damaged assessment

Preparation of detailed working drawings

Interim spot checks

Physical verification

Certifying contractor

Substantial Completion Certificate

Final Completion Certificate







16 12 2014

## WORLD BANK THIRD PARTY MONITORING AGENT (TPMA)

**Project Cost**  
6,510 MN

**Duration**  
12 Months

**Client**  
Oxford Policy Management

### Key Features

The World Bank Third Party Monitoring Agent (TPMA) project provides comprehensive oversight and accountability for over 1000 interventions across the KP region through integrated third-party monitoring, evaluation, social assessment, and infrastructure assessment

### Social Components

Women and children development  
Health and Hygiene  
Environment  
Community Development  
Capacity building  
Social Mobilization

**SERVICE**

### Physical Infrastructure

Access Roads  
Water supply  
Community Development works  
Drainage System  
Street Payments  
Productive infrastructure  
Irrigation system  
Urban centre  
Micro-Hydro schemes  
Infrastructure Rebuilding  
Project management/Planning  
Environmental and social impact of the project  
Closed supervisor of the Design relevance of civil work involved in the project  
Monitoring of 80 KM roads in different area of KP and FATA including bridges and culverts







## DESIGN CONSULTANCY SERVICES FOR DIVERSION & HANDLING OF MUNICIPAL/ INDUSTRIAL EFFLUENTS AND SOLID WASTE POLLUTING THE MAJOR CANALS OF PESHAWAR.

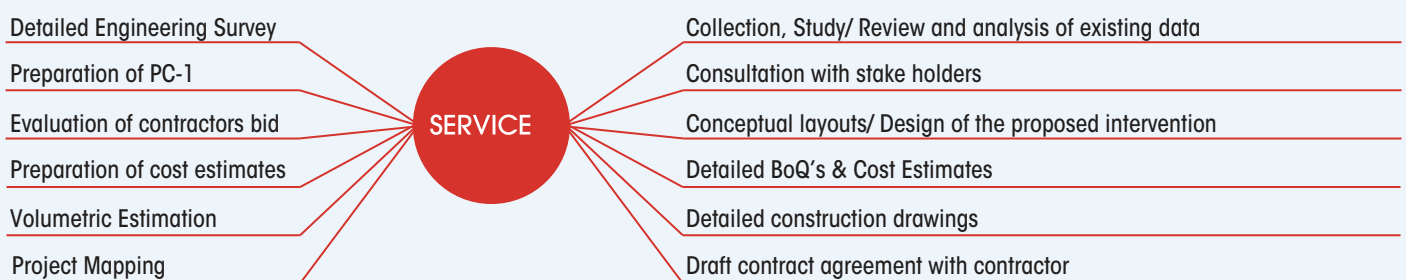
**Project Cost**  
474.68 MN

**Duration**  
14 Months

**Client**  
Peshawar Development Authority (PDA)

### Key Features

Feasibility Study, Detailed Engineering Design ,PC-1 Preparation of Diversion & Handling of Municipal/ Industrial Effluents and Solid Waste Polluting the Major Canals of Peshawar City







## FEASIBILITY STUDY AND DETAILED ENGINEERING DESIGN OF CONSTRUCTION OF INTER-DISTRICT ROAD FROM TORGHAR TO DISTRICT BUNER ADDITIONAL WORK: CONSTRUCTION OF INTER-DISTRICT ROAD FROM TORGHAR-BUNER ROAD GARHI HASSANZAI TO DEDAL KAMACH, SHANGLA (LENGTH APPROX. 18-KM)

**Project Cost**  
2,841.68 MN

**Duration**  
03 Months

**Client**  
Pakhtunkhwa Highways Authority (PKHA)

### Key Features

Feasibility Study and Detailed Engineering Design

Structural Design to ensure robust and reliable road infrastructure.

Geotechnical Investigations to analyse ground conditions and potential hazards.

Protection/Training Works to safeguard against natural elements and erosion.

Tender Documentations for transparent and effective procurement processes.

Construction Documentations to monitor and document the construction phase.

### SERVICE

Detailed design, structural drawings, Bill of Quantities (BOQ's), specifications, engineering estimates using AASHTO and British Road Note No.31 standards.

Reconnaissance Survey to assess the project's requirements and scope.

Topographic Survey for accurate mapping of the terrain and surroundings.

Geometric Studies for optimal road alignment and safety considerations.

Hydrological Survey to study water flow and drainage patterns.

Soil Investigation to understand soil properties and assess the foundation requirements.







## F/S, DESIGN AND CONST: OF 40 NO. OF EXISTING STEEL BRIDGES INCLUDING NEW BRIDGES (DFID ASSISTED, ACROW/ NATO CANADIAN STEEL BRIDGES PROVIDED BY PAK ARMY) (PHASE-I) SUB HEAD:

17 NOS BRIDGES ADP NO. 1639/200326 (2021-22) AND CONST: OF 14 NOS RCC BRIDGES IN KPK (ON NEED BASIS) SH: CONST: OF RCC BRIDGES AT BELLA GUJAR DISTRICT SWAT ADP NO. 1630/190598 (2021-22).

**Project Cost**  
2,969 MN

**Duration**  
24 Months

**Client**  
Communication & Works Department (C&W)

### Key Features

Feasibility Study and Detailed Engineering Design of conversion of existing **40 Nos** steel bridges to RCC bridges

Geometric Studies

Structural Design

Geotechnical Investigations

Protection/ Training Work

Tender Documentations

**SERVICE**

Detailed Design using AASHTO and British Road Note No.31.

Reconnaissance Survey

Topographic Survey

Soil Investigation

Hydrological Survey

Construction Supervision involving qualitative control for the road embankment, pavement and the required structures.

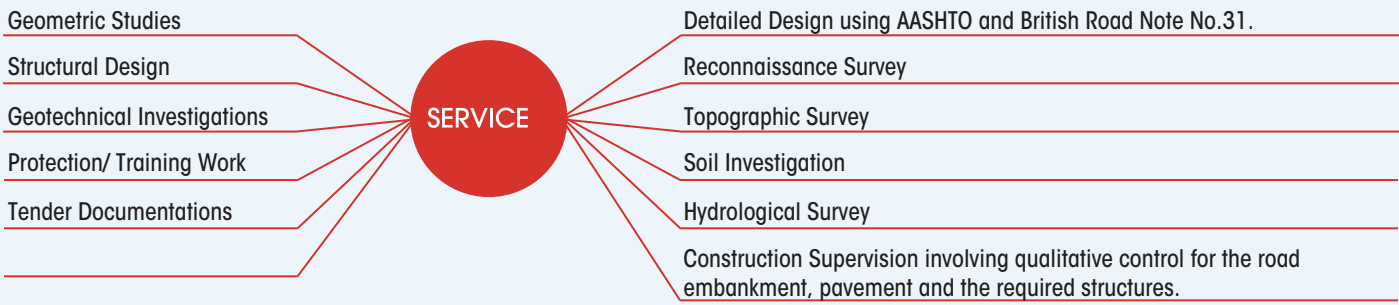






# CONSTRUCTION OF 14-NOS OF RCC BRIDGES IN KHYBER PAKHTUNKHWA (ON NEED BASIS) SH: CONSTRUCTION OF RCC BRIDGE AT ANDERAY GOVT: POST GRADUATE COLLEGE TIMERGARA DISTRICT DIR LOWER ADP NO. 1643/190598 (2021-22)

<b>Project Cost</b> 1,492 MN	<b>Duration</b> 12 Months	<b>Client</b> Communication & Works Department (C&W)
<b>Key Features</b> Design Review and Full Time Construction Supervision		







## FEASIBILITY STUDY, DETAILED ENGINEERING DESIGN OF CONSTRUCTION OF INTER-DISTRICT ROAD FROM TORGHAR TO DISTRICT BUNNER (LENGTH - 25 KM)

**Project Cost**  
3,946.78 MN

**Duration**  
03 Months

**Client**  
Pakhtunkhwa Highways Authority (PKHA)

**Key Features**  
Feasibility Study and Detailed Engineering Design

Geometric Studies

Structural Design

Geotechnical Investigations

Protection/ Training Work

Tender Documentations

Construction Documentations

**SERVICE**

Detailed Design using AASHTO and British Road Note No.31.

Reconnaissance Survey

Topographic Survey

Soil Investigation

Hydrological Survey







## F/S, AND DESIGN OF CONVERSION OF 40 NOS OF EXISTING STEEL BRIDGES TO RCC BRIDGES INCLUDING NEW BRIDGES (DFID ASSISTED, ACROW/ NATO TO CANADIAN STEEL BRIDGES PROVIDED BY PAK ARMY) ADP NO. 1707/ 200326 (2020-21)

**Project Cost**  
2,696 MN

**Duration**  
03 Months

**Client**  
Communication & Works Department (C&W)

### Key Features

Design Review and Full Time Construction Supervision of **18 Nos** Bridges.

Geometric Studies

Structural Design

Geotechnical Investigations

Protection/ Training Work

Tender Documentations

Construction Documentations

**SERVICE**

Detailed Design using AASHTO and British Road Note No.31.

Reconnaissance Survey

Topographic Survey

Soil Investigation

Hydrological Survey







## CONSTRUCTION OF 10 NUMBERS OF RCC BRIDGES IN KHYBER PAKHTUNKHWA (ON NEED BASIS)ADP NO. 1644/190598 (2020-21)

**Project Cost**  
1,492 MN

**Duration**  
03 Months

**Client**  
Communication & Works Department (C&W)

### Key Features

Feasibility Study and Detailed Engineering Design of **10 Nos** Bridges

Geometric Studies

Structural Design

Geotechnical Investigations

Protection/ Training Work

Tender Documentations

Construction Documentations

**SERVICE**

Detailed Design using AASHTO and British Road Note No.31.

Reconnaissance Survey

Topographic Survey

Soil Investigation

Hydrological Survey







## WIDENING AND CARPETING OF BOONI BUZAND TORKHOW ROAD (28-KM) DISTRICT CHITRAL ADP NO. 782/90417 (2014-15)

**Project Cost**  
1,108.40 MN

**Duration**  
36 Months

**Client**  
Communication & Works Department (C&W)

### Key Features

Feasibility Study, Detailed Engineering Design & Full Time Construction Supervision

Geometric Studies

Structural Design

Geotechnical Investigations

Construction Supervision

Tender Documentations

Construction Documentations

**SERVICE**

Detailed Design using AASHTO and British Road Note No.31.

Reconnaissance Survey

Topographic Survey

Soil Investigation

Hydrological Survey







## DESIGN & CONSTRUCTION OF MARDAN BYE PASS ROAD FROM RASHAKAI

INTERCHANGE TO JALALA (MISSING LINKS 8 KMS) ADP NO. 958/150230 (2015-16)

**Project Cost**  
1.078 MN

**Duration**  
28 Months

**Client**  
Communication & Works Department (C&W)

### Key Features

Detailed Engineering Design and Full Time Construction Supervision

Geometric Studies

Structural Design

Geotechnical Investigations

Protection/ Training Work

Tender Documentations

**SERVICE**

Detailed Design using AASHTO and British Road Note No.31.

Reconnaissance Survey

Topographic Survey

Soil Investigation

Hydrological Survey

Detailed construction supervision involving qualitative control for the road embankment, pavement and the required structures.







## F/S, DESIGN & CONSTRUCTION/IMPROVEMENT OF ROAD (A) KULHARI GHARBI ROAD (2.50 KMS)(B) PCC ROAD FROM GHSS BAFFA TO KHARAH (KULHARI SHAROI) ROAD DISTRICT MANSEHRA (PK-55)

ADP NO. 907/140670 (2014-15) F/S, DESIGN & IMPROVEMENT OF ROAD FROM KHAKI TO AFZAL ABAD DISTRICT MANSEHRA ADP NO.911/140707 (2014-15) F/S, DESIGN & CONSTRUCTION OF ROAD (A)CHOR KALAN ROAD (B) JABBORI TO METHAL KAYIAN ROAD VIA BANDA JEE SUCH DISTRICT MANSEHRA ADP NO. 912/140920 (2014-15)

**Project Cost**  
1,250 MN

**Duration**  
24 Months

**Client**  
Communication & Works Department(C&W)

### Key Features

Feasibility Study, Detailed Engineering Design of Roads & Bridges

Geometric Studies

Structural Design

Geotechnical Investigations

Construction Supervision

Tender Documentations

Construction Documentations

**SERVICE**

Detailed Design using AASHTO and British Road Note No.31.

Reconnaissance Survey

Topographic Survey

Soil Investigation

Hydrological Survey

Protection/ Training Works







**F/S, DESIGN & CONSTRUCTION OF ROAD RCC BRIDGE NEAR MURADPUR DISTRICT MANSEHRA (PK-55) ADP NO. 908/140674(2014-15)**  
**F/S, DESIGN & CONSTRUCTION OF SABIR SHAH NAKOT BRIDGE DISTRICT MANSEHRA ADP NO.909/140675(2014-15)**  
**F/S, DESIGN & CONSTRUCTION OF SUM BRIDGE DISTRICT MANSEHRA ADP NO. 910/140676 (2014-15)**

**Project Cost**  
1,250 MN

**Duration**  
24 Months

**Client**  
Communication & Works Department (C&W)

**Key Features**

Feasibility Study, Detailed Engineering Design of Roads & Bridges

Geometric Studies

Structural Design

Geotechnical Investigations

Construction Supervision

Tender Documentations

Construction Documentations

**SERVICE**

Detailed Design using AASHTO and British Road Note No.31.

Reconnaissance Survey

Topographic Survey

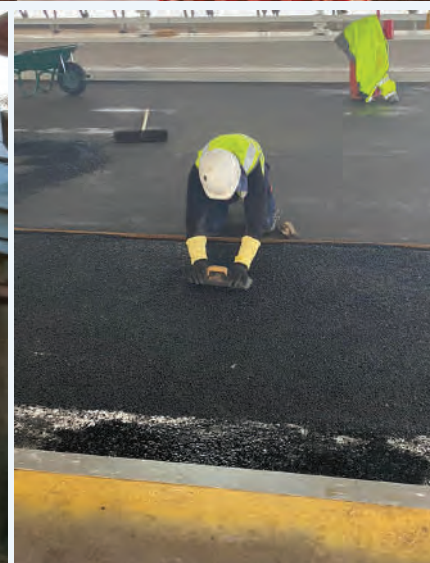
Soil Investigation

Hydrological Survey

Protection/ Training Works







## REHABILITATION OF 09 NO. ROADS AND 09 BRIDGES DUE TO FLOOD DURING JULY-AUG-2015 DISTRICT CHITRAL

### SH: - REHABILITATION OF 09 BRIDGES.

PROVISION OF REHABILITATION OF FLOOD TORRENTIAL AFFECTED ROADS & BRIDGES (SDG)ADP NO. 1168/140498 (2016-17)

SH: - CONSTRUCTION OF RCC BRIDGE KOSHT AT BUNI DISTRICT CHITRAL.

**Project Cost**  
700 MN

**Duration**  
15 Months

**Client**  
Communication & Works Department (C&W)

#### Key Features

Design Review and Full Time Construction Supervision of flood affected **09 Nos** bridges

Geometric Studies

Structural Design

Geotechnical Investigations

Construction Documentations

Tender Documentations

**SERVICE**

Detailed Design using AASHTO and British Road Note No.31.

Reconnaissance Survey

Topographic Survey

Soil Investigation

Hydrological Survey

Protection/ Training Works





## F/S & DESIGN OF (A) IMPROVEMENT & REHABILITATION DODBA TO SHERINGAL SAWNAI ROAD (15-KM) I/C 04-NOS BRIDGES (B) CONSTRUCTION OF RCC BRIDGE AT KOTKAY U/C SULTAN KHEL DISTRICT UPPER DIR (2014-15) ADP NO- 779/140997 (2014-15)

**Project Cost**  
1,205 MN

**Duration**  
24 Months

**Client**  
Communication & Works Department (C&W)

### Key Features

Feasibility Study and Detailed Engineering Design and Full Time Construction Supervision

Geometric Studies

Structural Design

Geotechnical Investigations

Construction Supervision

Tender Documentations

Construction Documentations

**SERVICE**

Detailed Design using AASHTO and British Road Note No.31.

Reconnaissance Survey

Topographic Survey

Soil Investigation

Hydrological Survey

Protection/ Training Works







- 1) FEASIBILITY STUDY & DESIGN OF QALANDAR ABAD BYPASS ROAD (4-KM) DISTRICT ABBOTTABAD ADP NO. 1121/160625 (2016-17)
- 2) FEASIBILITY STUDY, DESIGN & SUPERVISION OF MANSEHRA BYPASS ROAD DISTRICT MANSEHRA ADP NO. 1120/160624 (2016-17)

**Project Cost**  
2,693.25 MN

**Duration**  
03 Months

**Client**  
Communication & Works Department (C&W)

**Key Features**  
Feasibility study & detailed engineering design of bypass roads

Detailed Structural Design

Construction Drawings

Tender documentations

Bids evaluation

Technical Specifications

Quality Assurance

BOQ'S verification

**SERVICE**

Feasibility Study

Topographic Survey & Mapping

Soil Investigation

Hydraulic Studies

Drainage & Erosion works

Geotechnical Investigation





# PROJECT LIST

PROJECT LIST					
S/N	Start Date/ Comp. Date	Name of the Project	Client	Location	Project Cost (m. Rs.)
<b>ROADS &amp; BRIDGES PROJECTS</b>					
1	Aug 2016/ Feb 2018	Feasibility Study, Design & Rehabilitation of Mingora Jambil Gokand Road District Swat ADP No. 1003/140970	C&W Swat KPK	District Swat KPK	Rs. 1,650 M
2	Jan 2015/ Dec 2017	Design & Construction of Mardan Bye Pass Road from Rashakai Interchange to Jalala (Missing Links 8 KMS) ADP No. 958/150230 (2015-16)	C&W Mardan KPK	District Mardan	Rs. 1,078 M
3	Nov 2014/ Nov 2016	F/S, Design & Construction/Improvement of road (A) Kulhari Gharbi road (2.50 KMS) (B) PCC road from GHSS Baffa to Kharah (Kulhari Sharoi) road District Mansehra (PK-55) ADP No. 907/140670 (2014-15) F/S, Design & improvement of road from Khaki to Afzal Abad District Mansehra ADP No.911/140707 (2014-15) F/S, Design & Construction of road (A) Chor Kalan road (B) Jabbori to Methal Kayian road via Banda Jee Such District Mansehra ADP No. 912/140920 (2014-15)	C&W Mansehra KPK	District Mansehra	Rs. 1,250 M
4	Nov 2014/ Sep 2016	F/S, Design & Construction of road RCC bridge near Muradpur District Mansehra (PK -55) ADP No. 908/140674(2014-15) F/S, Design & Construction of Sabir Shah Nakot bridge District Mansehra ADP No. 909/140675(2014-15) F/S, Design & Construction of sum bridge D istrict Mansehra ADP No. 910/140676 (2014 -15)	C&W Mansehra KPK	District Mansehra	Rs. 1,402 M
5	May 2017/ Aug 2018	Rehabilitation of 09 No. roads and 09 bridges due to flood during July-Aug-2015 District Chitral SH: - Rehabilitation of 09 bridges. Provision of rehabilitation of flood torrential affected roads & bridges (SDG) ADP No. 1168/140498 (2016 -17) SH: - Construction of RCC bridge Kosht at Buni District Chitral.	C&W Chitral	District Chitral	Rs. 700 M
6	Feb 2016/ Dec 2018	Construction of RCC Bridge at Swausar Kasal Gulibagh and Sro Manzai Upper Dir ADP No. 1141/150988 (2015 -16)	C&W Dir	Upper Dir	Rs. 155.003 M



# PROJECT LIST

PROJECT LIST					
S/N	Start Date/ Comp. Date	Name of the Project	Client	Location	Project Cost (m. Rs.)
		Construction of Bridge at Patrak Kumrat Road Upper Dir ADP No. 1144/151082 (2015 -16)			
7	Aug 2015/ Jul 2017	F/S & Design of (a) improvement & Rehabilitation Dodba to Sheringal Sawnai Road (15 -Km) I/C 04- Nos Bridges (b) Construction of RCC Bridge at Kotkay U/C Sultan Khel District Upper Dir (2014 -15) ADP No- 779/140997 (2014-15)	C&W Dir	Upper Dir	Rs.1,205 M
8	Sep 2016/ Sep 2018	Feasibility Study, Design & Construction of Ayun Bridge District Chitral ADP No. 1046/ 140984	C&W Chitral	District Chitral	Rs. 84.002 M
9	Jan 2018/ Jan 2018	Feasibility Study and Detailed Engineering Design of PKHA Works. SH: - Road from Kumrat to Kalam.	C&W Dir	Dir Upper	Rs. 600 M
10	Dec 2016/ Jan 2017	1) Feasibility Study & Design of Qaland Abad Bypass Road (4 -KM) District Abbottabad ADP No. 1121/160625 (2016 -17) 2) Feasibility Study, Design & Supervision of Mansehra Bypass Road District Mansehra ADP No. 1120/160624 (2016 -17)	C&W Abbottabad	District Mansehra	Rs. 2,693.25 M
11	Oct 2016/ Jul 2017	Feasibility Study & Design and Construction of Road I/C 03 No. Bridges along right Bank River Jhelum from Phalair to Kohala (35 -KM) District Abbottabad Changed to Feasibility study, Design of Road I/C 03 No. of Bridges along Right Bank of River Jhelum from Phalair to Kohala (35 -KM) District Abbottabad ADP No. 1089/150887 (2016 -17)	C&W Abbottabad	District Abbottabad	Rs. 1,674.76 M
12	Aug 2015/ Aug 2015	Feasibility Study, Design & Rehabilitation of Mingora Jambil Gokand Road District Swat ADP No. 893 (2014 -15)	C&W Swat KPK	District Swat KPK	Rs. 650 M
13	Oct 2016/ Jan 2017	Design & Construction of road from Changla to Islamabad District Abbottabad ADP No. 1124/160626	C&W Abbottabad	District Abbottabad	Rs. 2,003.27 M
14	Apr 2018/ Apr 2018	Consultancy services for design vetting of the schemes "Rehabilitation of road from Chamkani to PAF Badabera Peshawar District. Sub Head: Bridge – 1 & Bridge – 2. ADP No. 1001/140680 (2017 -18)	C&W Peshawar	Peshawar	Rs. 300 M



# PROJECT LIST

PROJECT LIST					
S/N	Start Date/ Comp. Date	Name of the Project	Client	Location	Project Cost (m. Rs.)
15	Mar 2017/ Mar 2017	Feasibility Study, Design and construction of Baryam to Gat Serai Road, Arkot to Baikand road and Kabal to Kala Kalay Road (20 -KM) Sub Work: Beryum to Gat Serai Road (02 Nos. Bridges) ADP No. 996/140682 (2016 -17)	C&W Swat KPK	District Swat KPK	Rs.800 M
16	Mar 2017/ Apr 2017	Feasibility Study & Detailed Engineering Design for reconstruction of bridge at Tauheed Abad, District Peshawar – Naguman section of provincial highway S1.	PKHA Peshawar	Naguman Peshawar	Rs. 640 M
17	Apr 2020/ May 2020	Design of Road at Ghar Kalay (Shuhuda Road) Mitha Khel District Karak. ADP No. 923 / 190144 (2019-20)	C&W Karak	District Karak	Rs. 270.941 M
18	Feb 2016/ Mar 2016	Construction of RCC Bridge at Guldok Dhamtor District Abbottabad (90 Meters) ADP No. 1162 / 150861	C&W Abbottabad	District Abbottabad	Rs. 250 M
19	Jul 2016/ Aug 2016	Pakhtunkhwa Highway Authority (PKHA) Consultancy services for engineering design of “Restoration of Bada bridge on Swabi -Topi Road District Swabi	PKHA Peshawar	District Swabi	Rs. 150 M
20	Aug 2017/ Aug 2017	Provision for rehabilitation of flood / torrential affected roads & bridges (SDG) ADP No. 1168 / 160498 (2016-17) Restoration / Reconstruction of Shalfalam bridge on river Panjkora Dir Lower.	C&W Dir	Dir Lower	Rs. 200 M
21	Jan 2019/ Dec 2019	Construction of Thlikote Bridge at Jhari Kas Road District Haripur. ADP No: 1262/170577 (2017 -18)	C&W Haripur	District Haripur	Rs. 174 M
22	Sep 2016/ Sep 2020	Widening and carpeting of Booni Buzand Torkhow road (28-Km) District Chitral ADP No. 782/90417 (2014-15)	C&W Chitral	District Chitral	Rs. 1,108.4 M
23	Aug 2020/ Nov 2020	Feasibility Study, Detailed Engineering Survey, Soil Investigation, Hydrological Study and Detailed Design of a Bridge & Rural Road Immit Valley, Ghizer, Gilgit Baltistan	AKDN	Gilgit Baltistan	Rs. 120 M
24	Feb 2021/ Apr 2021	Feasibility Study, Preparation of PC -1, and Tender Documents of Proposed PSDP Scheme “Construction of Pre-Stressed RCC Bridge at Hassa over River Kunhar, near Govt. Degree College, Hassa, UC Shohla Mazullah, District Mansehra” (Estimated Bridge Span = 60 M )	Pak-PWD	District Abbottabad	Rs. 125 M



# PROJECT LIST

S/N	Start Date/ Comp. Date	Name of the Project	Client	Location	Project Cost (m. Rs.)
25	April 2021/ July 2021	Feasibility Study, Detailed Engineering Design of "Construction of Inter-District Road from Torghar to District Buner (Length - 25 KM)	PKHA	District Torghar/Buner	Rs. 3,946.78 M
26	April 2021/ Aug 2021	F/S, and Design of Conversion of 40 NOs of Existing Steel Bridges to RCC Bridges Including New Bridges (DFID Assisted, Acrow/ NATO to Canadian Steel Bridges Provided by Pak Army) ADP No. 1707/ 200326 (2020 -21)	C&W Swat	District Swat	Rs. 2,695 M
27	May 2021/ Sep 2021	Construction of 10 Numbers of RCC Bridges in Khyber Pakhtunkhwa (On Need Basis) ADP NO. 1644/190598 (2020 -21)	C&W Buner	District Buner	Rs. 1,492 M
28	May 2021/ Jan 2023	Construction of Roads and Bridges on Need Basis' ADP No. 1764/ 180615 (2020 -21) Sub Head: 1) Const./ Widening/ Dualization of Road from Lund Khwarh to Fazle Abad Pul Killi and Mote Banda Tehsil Takht Bhai. 2) Const./ Rehab: & B/T of Road from Hathian to Lund Khwarh and Lund Khwarh bypass Road. 3) Const./ Rehab: & B/T of Road from Umar Abad to Sanga Gul Mera Road.	C&W Mardan	District Mardan	Rs. 400 M
29	Sep 2019/ Nov 2019	F/S and Detailed Engineering Design of ADP Scheme No. 1014-190490 (2019-20) "Construction of Flyover/ Underpass at Farooq-E-Azam Chowk Charsadda"	PKHA Peshawar	District Charsadda	Rs. 700 M
30	Sep 2021/ Oct 2023	Feasibility Study, Detailed Design and Construction Supervision of RCC Bridge at (1) Gram Tribal District Kurram (2) Ali Zyarat Zeran Tribal District Kurram ADP No. 1872/ 195305 (2020-21)	C&W Kurram	District Kurram	Rs. 450.56 M
31	Sep 2021/ Jun 2023	Feasibility Study, Detailed Design and Construction Supervision of RCC Bridge in Mishti Tribal Districts Orakzai of Khyber Pakhtunkhwa, ADP No. 1974/195305 (2020 -21)	C&W Orakzai	District Orakzai	Rs. 341.89 M
32	Dec 2021/ Feb 2022	Feasibility Study and Detailed Engineering Design of ADP Scheme No. 1573/ 210440 (2021-22): Construction of Approach Roads of Kalur Kot Bridges at River Indus.	PKHA	District Kohat	Rs. 1,500 M
33	Apr 2022/ Apr 2024	Construction Supervision of PKHA Works: ADP No. 1613/190490 (2021 -2022) Construction of Flyover at Kuladher Chowk District Charsadda.	PKHA	District Charsadda	Rs. 700 M



# PROJECT LIST

PROJECT LIST					
S/N	Start Date/ Comp. Date	Name of the Project	Client	Location	Project Cost (m. Rs.)
34	Sep 2022/ Aug 2024	Construction of 14-Nos of RCC Bridges in Khyber Pakhtunkhwa (on need basis) SH: Construction of RCC Bridge at Anderay Govt: Post Graduate College Timergara District Dir Lower ADP No. 1643/190598 (2021 -22)	C&W Dir Lower	District Timergara	Rs. 1,492 M
35	Mar 2023/ May 2023	Construction of Nowshera Bridge Abbottabad ADP No. 1500/220598 (2022 -23)	C&W Abbottabad	Abbottabad KPK	358.54 M
36	May 2023/ Aug 2023	Construction of Takatak to Hayaserai Bridge Dir Lower ADP No. 1521/220850 (2022 -23)	C&W Dir Lower	District Timergarah	550 M
37	Jun 2023/ Aug 2023	Feasibility Study & Construction of Bridge on River Indus in Kabalgram Tehsil Martung, Shangla ADP No. 1479/220755 (2022-23)	C&W Shangla	Kabalgram Martung	808.77 M
38	Oct 2023/ Jan 2024	Feasibility Study and Detailed Engineering Design of Construction of Inter-District Road from Torghar to District Buner Additional Work: Construction of Inter-District Road from Torghar-Buner Road Garhi Hassanazai to Dedal Kamach, Shangla (Length Approx. 18 - KM)	PKHA	Torghar- Bunner	2,841.68 M
MONITORING & EVALUATION/ SOCIAL SECTOR					
1	Feb 2013 Jan 2015	Monitoring of Rural Livelihood & Community Infrastructure Project (RLCIP)	World Bank	KPK/ FATA	Rs. 12 M
2	Feb 2013 Jan 2015	Monitoring of FATA Urban Centre Project (FUCP)	World Bank	KPK/ FATA	Rs. 07 M
3	Feb 2013 Jan 2015	Monitoring of Economic Revitalization of KP and FATA (ERKF)	World Bank	KPK/ FATA	Rs. 20 M
4	Feb 2013 Jan 2015	Monitoring of KP Emergency Road Recovery Project (KP ERRP)	World Bank	KPK/ FATA	Rs. 08 M
5	Feb 2013 Jan 2015	Monitoring of KP Southern Community Support Project (SADP)	World Bank	KPK/ FATA	Rs. 181 M
BUILDINGS PROJECTS					
1	Sep 2016 Sep 2019	Long Term Agreement for The Provision of Damage Assessment, Supervision and Spot Checks of Schools and Medium Scale Rural Infrastructure Projects	UNDP	KPK FATA	Rs. 18,048 M
2	Feb 2016 Dec 2016	Damage Assessment of 100 Infrastructure Schemes in SWA, rehabilitation under CR FATA UNDP	UNDP	South Waziristan	Rs. 5,400 M
3	Feb 2020 Sep 2020	Conducting of Substantial Completion of the Economic Infrastructure Schemes in South Waziristan, North Waziristan and Khyber Districts.	UNDP	FATA & FRs	Rs. 295 M



# PROJECT LIST

PROJECT LIST					
S/N	Start Date/ Comp. Date	Name of the Project	Client	Location	Project Cost (m. Rs.)
4	Dec 2019 Dec 2020	Conducting of Schools Assessment in District Kurram & Orakzai	UNDP	District Kurram & Orakzai	Rs. 175 M
5	Aug 2022/ Sep 2023	Construction of Slaughter House (Design and Supervision) at District Peshawar Khyber Pakhtunkhwa Pakistan.	UNIDO	District Peshawar	Rs. 300 M
6	Sep 2023/ Sep 2025	Long Term Agreement Project titled "UNDP -RFP- 2023-145-Long Term Agreement for the provision of Damage Assessment, Supervision and Spot Checks of Schools and medium scale Rural Infrastructure Projects	UNDP	All KPK	23,048 M
RAILWAY ENGINEERING PROJECTS					
1	Jan 2018 Dec 2019	Feasibility Study of Rail Link from Quetta to Kotla Jam (538 Kms) (Updating of Existing Feasibility Study).	Pak Railway	Quetta	Rs. 236.91 B
2	Jan 2018 Dec 2019	Feasibility Study of Up-Gradation of existing Railway Line from Rohri to Kohi Taftan Via Quetta Including the Realignment Of Sibi-Spezand Section (1022 Kms).	Pak Railway	Quetta	Rs. 186.09 B
TRANSACTION ADVISORY PROJECTS					
1	May 2021 Oct 2022	Transaction Advisory Services for Improvement of Rail Link from Jacobabad to Kot-Adu (ML-2) Section of Pakistan Railways.	PAK Railway	Kot Adu	600.27 M
2	May 2021 Oct 2022	Transaction Advisory Services for Improvement of Rail Link from Rohri to Sibi Section of Pakistan Railways.	PAK Railway	Quetta	344.62 M
3	May 2021 Oct 2022	Transaction Advisory Services for Improvement of Rail Link from (CTR and Signaling) from Kot Adu to Attock (ML-2) Section of Pakistan Railways.	PAK Railway	Kot Adu Attock	1,159.60 M
4	May 2021 Oct 2022	Transaction Advisory Services for Improvement of Rail Link from Kotri to Jacobabad Section of Pakistan Railways.	PAK Railway	Kotri Jacobabad	882.81 M
WATER SUPPLY & SANITATION PROJECT					
1	Oct 2020 Apr 2021	Design Consultancy Services for Diversion & Handling of Municipal/ Industrial Effluents and Solid Waste Polluting the Major Canals of Peshawar.	PDA	Peshawar	474.68 M
2	Dec 2022 Jun 2023	Feasibility Studies, Detailed Design of Water Supply Scheme from Bara River to Peshawar Cantt & City.	PHE	Peshawar	-





## DISCIPLINE

## NUMBER

### KEY PERSONNEL

	Experience > 10 years	Experience between 5 to 10 years	No. of Permanent & contract Employees
Project Director	1	-	1
Institutional Specialist	1	-	1
Team Leader	1	-	1
Highway Engineer / Contract Specialist	1	-	1
Project Managers	1	-	1
Monitoring & Evaluation Specialist	1	1	2
Geotechnical Engineer	1	-	1
Surveyor (Field Enumerators)	3	2	5
GIS specialist	1	-	1
Software Quality Assurance	1	-	1
IT Services Management	1	-	1
Business Process Management	1	-	1
Chartered Accountants	1	-	1
Certified Public Accountant	1	-	1
Occupational Health and Safety experts	1	-	1
Quantity Surveyors	1	1	2
Transportation experts	1	-	1
Water & Sanitation experts	1	-	1
Environmental & Social experts	1	-	1
Finance / Economist	1	-	1
Other Support Staff	5	3	5
Administrative Staff / Research Officers	3	1	2

**TOTAL**

**30**

**8**

**33**



## SURVEY EQUIPMENT

S. NO	DESCRIPTION	QUANTITY
1	TRIMBLE R4 GNSS System	02
2	Total Station with all accessories Sokkia Power Set (2010-322)	10 Nos.
3	Auto level with all accessories Sokkia B20 Model No. D10323	12 Nos.
4	Total Station with all accessories Sokkia Power Set (2010-322) Model No. D21809, Motorola GP 10 Walkie – Talkie	30 Nos.
5	Non-Prismatic Total Stations with all accessories Sokkia Power Set	20 Nos.
6	Theodolite Station with all accessories Sokkia Power Set	16 Nos.
7	Auto level with all accessories Sokkia B20 Model No. D10323	12 Nos.

## OTHER EQUIPMENT

S. NO	DESCRIPTION	QUANTITY
1	Odometer (Distance Measuring Device)	14 Nos.
2	Portable Axle Load Measuring Instrument	19 Nos.

## IT EQUIPMENT

S. NO	DESCRIPTION	QUANTITY
1	Online & Offline Data Centres and Storage Facilities	1x4 Nos.
2	IT Server	1 Nos.
3	Teamwork Software	1 Nos.
4	Bridges & Roads Software	1 Nos.
5	Laptops	38 Nos.
6	Desktops	05 Nos.
7	A3 Printers & Scanners	03 Nos.
8	A4 Printers & Scanners	14 Nos.
9	Colour Printers	06 Nos.
10	LCD's	04 Nos.
11	Multimedia's	03 Nos.
12	Digital Cameras	10 Nos.

## OUR CLIENTS



World Bank (WB)



Peshawar Development  
Authority (PDA)



JICA



Pakistan Railways



Asian Development  
Bank (ADB)



Communication & Works  
Department (C&W)



United Nations  
Development  
Program (UNDP)



Pakhtunkhwa Highways  
Authority (PKHA)



United Nations  
Children's Fund  
(UNICEF)



Aga Khan Development  
Network (AKDN)



Pakistan Public Works  
Department (Pak. PWD)



United Nations Industrial  
Development Organization  
(UNIDO)



## Contact Us



091 5700763



info@spectra.net.pk



www.spectra.net.pk



Office No. 9, 5th Floor, Block-B, Jawad Towers,  
Main University Road Peshawar KPK PAKISTAN